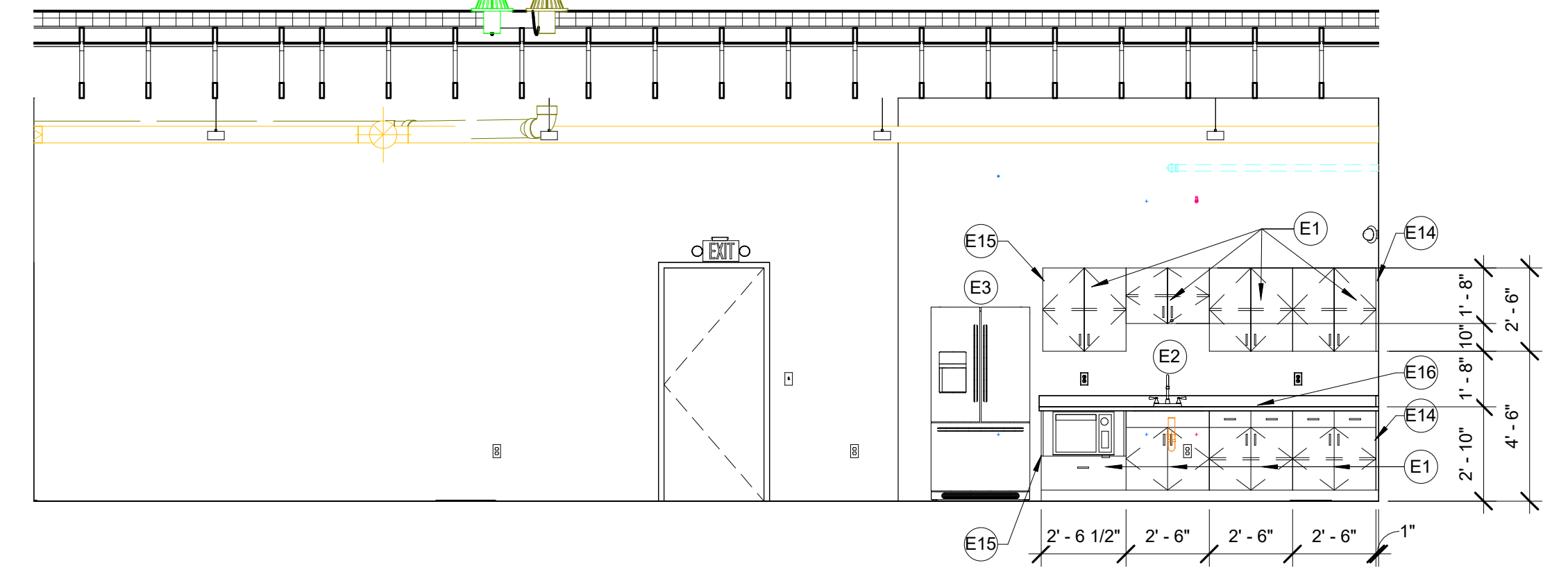


INTERIOR ELEVATION GENERAL NOTES

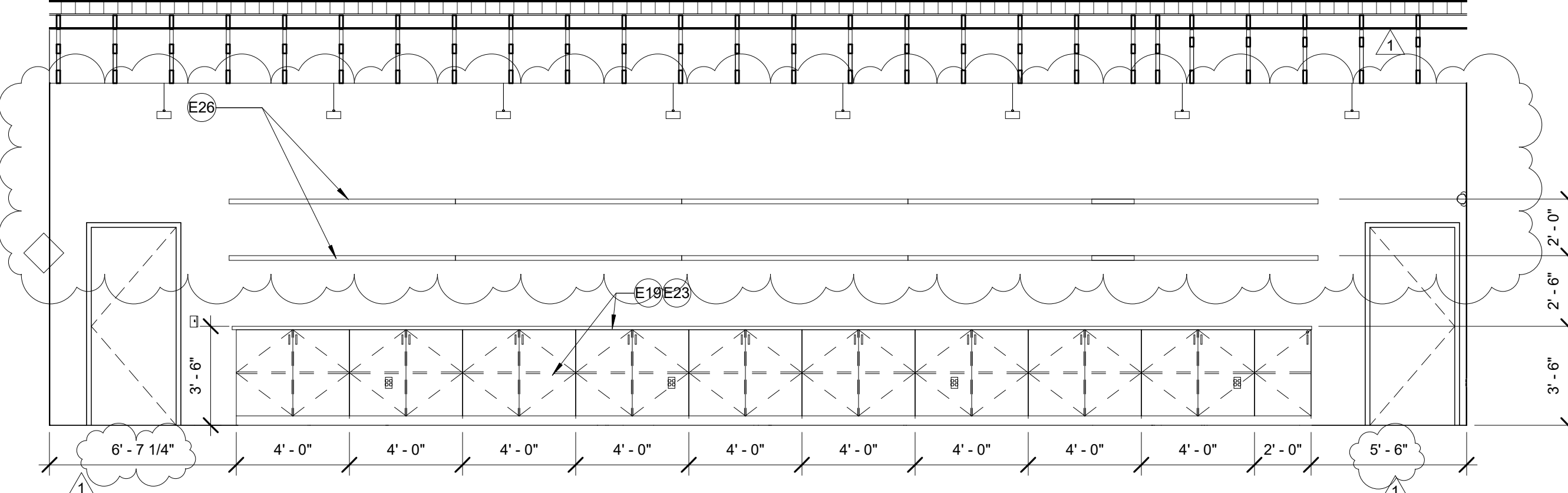
1. ALL WORK SHALL BE DONE IN ACCORDANCE WITH ALL FEDERAL, STATE AND LOCAL CODES, LAWS AND REGULATIONS.
2. CONTRACTOR TO FIELD VERIFY ALL DIMENSIONS PRIOR TO ANY FABRICATION OF MILLWORK. ANY DISCREPANCIES ARE TO BE REPORTED TO THE ARCHITECT.
3. ALL BASE/WALL CABINETS TO HAVE PLASTIC LAMINATE FINISH UNLESS NOTED OTHERWISE. REFER TO ROOM FINISH SCHEDULE FOR COUNTERTOP FINISH.
4. ALL FILE CABINETS ARE TO ACCOMMODATE FILE SIZE HANGING FILES. HANGING FILE RACK IS TO BE BUILT-IN.
5. ALL BASE CABINETS AND KNEE SPACES TO HAVE VINYL BASE. PROVIDE SOLID BACKING AS REQUIRED.
6. ALL BASE CABINETS TO HAVE ONE ADJUSTABLE SHELF AND ALL WALL CABINETS TO HAVE TWO ADJUSTABLE SHELVES UNLESS NOTED OTHERWISE.
7. ALL CABINETS TO HAVE 4" WIRE PULLS.
8. PROVIDE A 3" DIA. GROMMET WITH PLASTIC INSERT AT EACH WORK SPACE / KNEE SPACE.
9. THE CONTRACTOR SHALL PROVIDE WOOD BLOCKING FOR THE INSTALLATION OF ALL MILLWORK, TOILET ACCESSORIES, HANDS, ETC. AS REQUIRED.
10. PROVIDE MOLDED VINYL PIPE COVERS ON ALL EXPOSED PLUMBING AT WALL SINKS.
11. ALL COUNTERTOP SUPPORT BRACKETS TO BE PAINTED TO MATCH THE WALL COLOR UNLESS OTHERWISE NOTED.
12. ALL COUNTERTOPS ARE TO HAVE SELF EDGE WITH COVED BACKSPLENDERS/PLASH.
13. VERIFY ALL MATERIALS AND COLORS WITH OWNER.

KEYED NOTES - INTERIOR ELEVATIONS

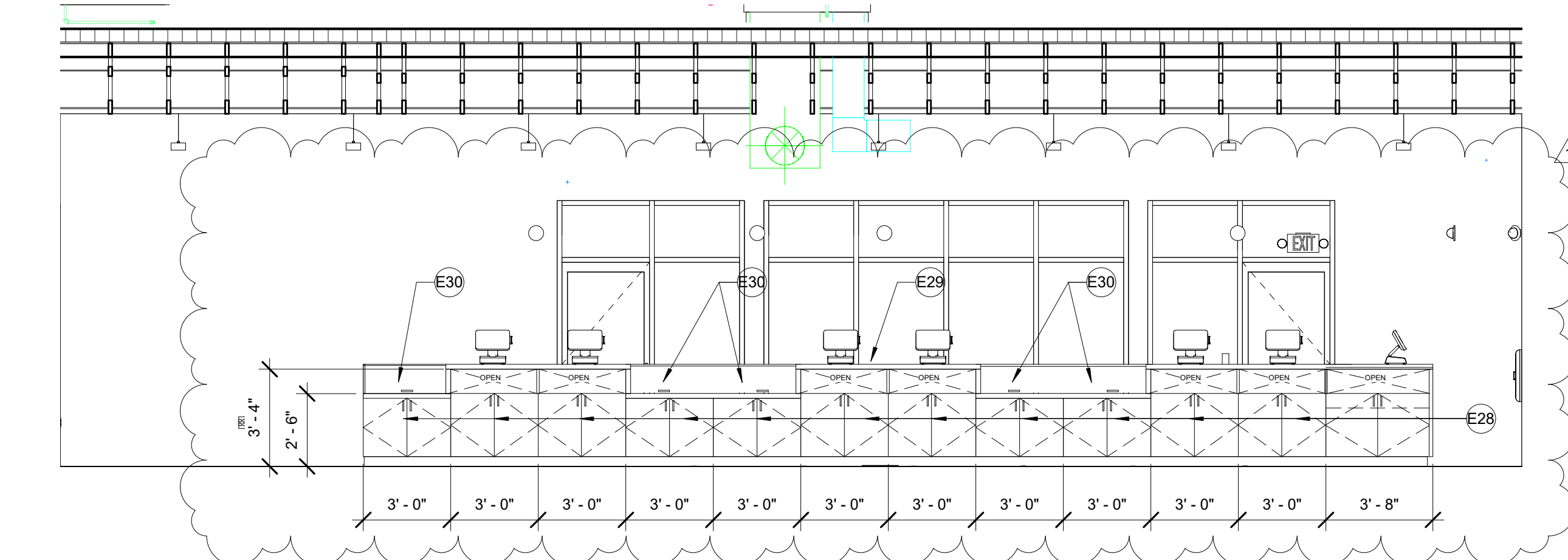
- E1 PLASTIC LAMINATE BASE/WALL CABINETS. COLOR AS SELECTED BY OWNER.
- E2 SINK. REFER TO PLUMBING DOCUMENTS.
- E3 REFRIGERATOR. N.I.C.
- E4 WALL HUNG LAVATORY. REFER TO PLUMBING DOCUMENTS.
- E5 PIPE GUARDS. REFER TO PLUMBING DOCUMENTS.
- E6 18X36 MIRROR CENTERED ON THE SINK BELOW. BASIS OF DESIGN BOBRICK B-165
- E7 SOAP DISPENSER. MOUNT AT ACCESSIBLE HEIGHT.
- E8 PAPER TOWEL DISPENSER. MOUNT AT ACCESSIBLE HEIGHT.
- E9 36" GRAB BAR WITH VANDAL PROOF ANCHORS. BASIS OF DESIGN BOBRICK B-6806 99
- E10 42" GRAB BAR WITH VANDAL PROOF ANCHORS. BASIS OF DESIGN BOBRICK B-6806 99
- E11 18" GRAB BAR WITH VANDAL PROOF ANCHORS. BASIS OF DESIGN BOBRICK B-6806 99
- E12 ACCESSIBLE WATER CLOSET. FLUSH HANDLE TO BE ON THE OPEN SIDE OF THE TOILET. REFER TO PLUMBING DOCUMENTS.
- E13 DOUBLE ROLL TOILET TISSUE DISPENSER. BASIS OF DESIGN BOBRICK B-2888
- E14 FILLER PANEL TO MATCH CABINETS.
- E15 FINISHED END.
- E16 COUNTERTOP. PL1. COLOR AS SELECTED BY OWNER.
- E17 TILED WET WALL.
- E18 12" W x 18" D TRIPLE TIER LOCKERS WITH SLOPED TOP AND Z-BASE. BASIS OF DESIGN SALSBURY INDUSTRIES - 6300/SERIES 12" WIDE TRIPLE TIER LOCKERS.
- E19 PLASTIC LAMINATE CASEWORK. PL1.1 COLOR AS SELECTED BY OWNER.
- E20 SOLID SURFACE COUNTER. COLOR AS SELECTED BY OWNER.
- E21 COUNTER SUPPORT BRACKET @ 4'-0" O.C. MAX. RAKKS EH-1818 BRACKET
- E22 DRAWER STACK. COLOR AS SELECTED BY OWNER.
- E23 WORK SURFACE. COLOR AS SELECTED BY OWNER.
- E24 DEAL DRAWER.
- E25 POS.
- E26 10" DEEP PLASTIC LAMINATE FLOATING SHELF. WITH TRIAIDE CONCEALED MOUNTING BRACKET. SHELF TO BE FINGER JOINTED PINE WITH 1/4" CLEAR PINE FACE WRAP. LED STRIP TO BE RECESSED INTO THE UNDERSIDE OF THE SHELVING. COORDINATE FINAL ELEVATION WITH OWNER. PROVIDE BLOCKING AS REQUIRED.
- E27 GLASS DISPLAY CASE.
- E28 CABINETS. COLOR AS SELECTED BY OWNER.
- E29 SOLID SURFACE COUNTER. COLOR AS SELECTED BY OWNER.
- E30 DRAWER FRONT WITH SOLID SURFACE PULL. OUT TRAY WITH BALL BEARING DRAWER GLIDES.
- E31 PNEUMATIC TUBE CENTRAL STATION. VERIFY WITH OWNER.
- E32 1/2" PLASTIC LAMINATE REVEAL.
- E33 PLASTIC LAMINATE DOOR FRONT WITH GLASS. PROVIDE 5" DEEP PLASTIC LAMINATE DISPLAY CABINET WITH (3) ADJUSTABLE GLASS SHELVES. DOORS TO BE LOCKABLE WITH CONCEALED PULLS.



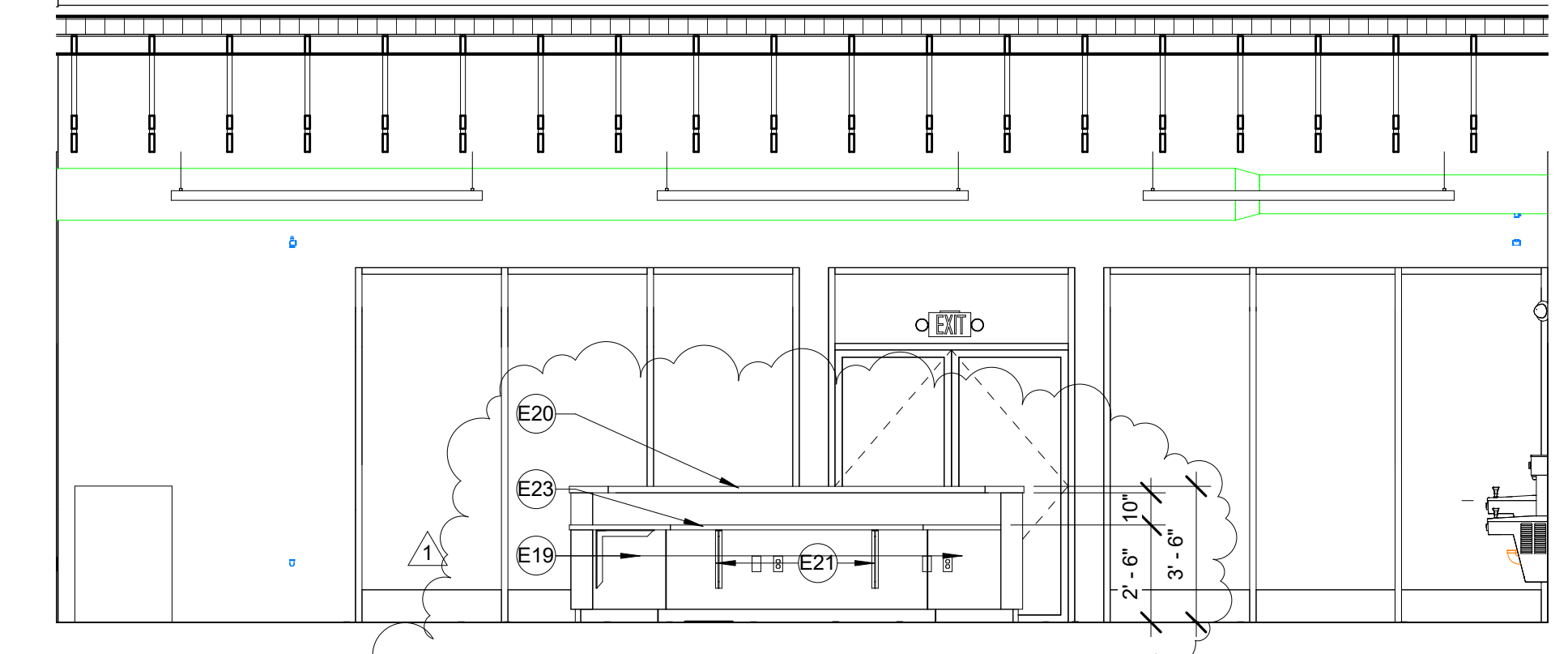
1 BREAKROOM - SOUTH ELEVATION
 A221 1/4" = 1'-0"



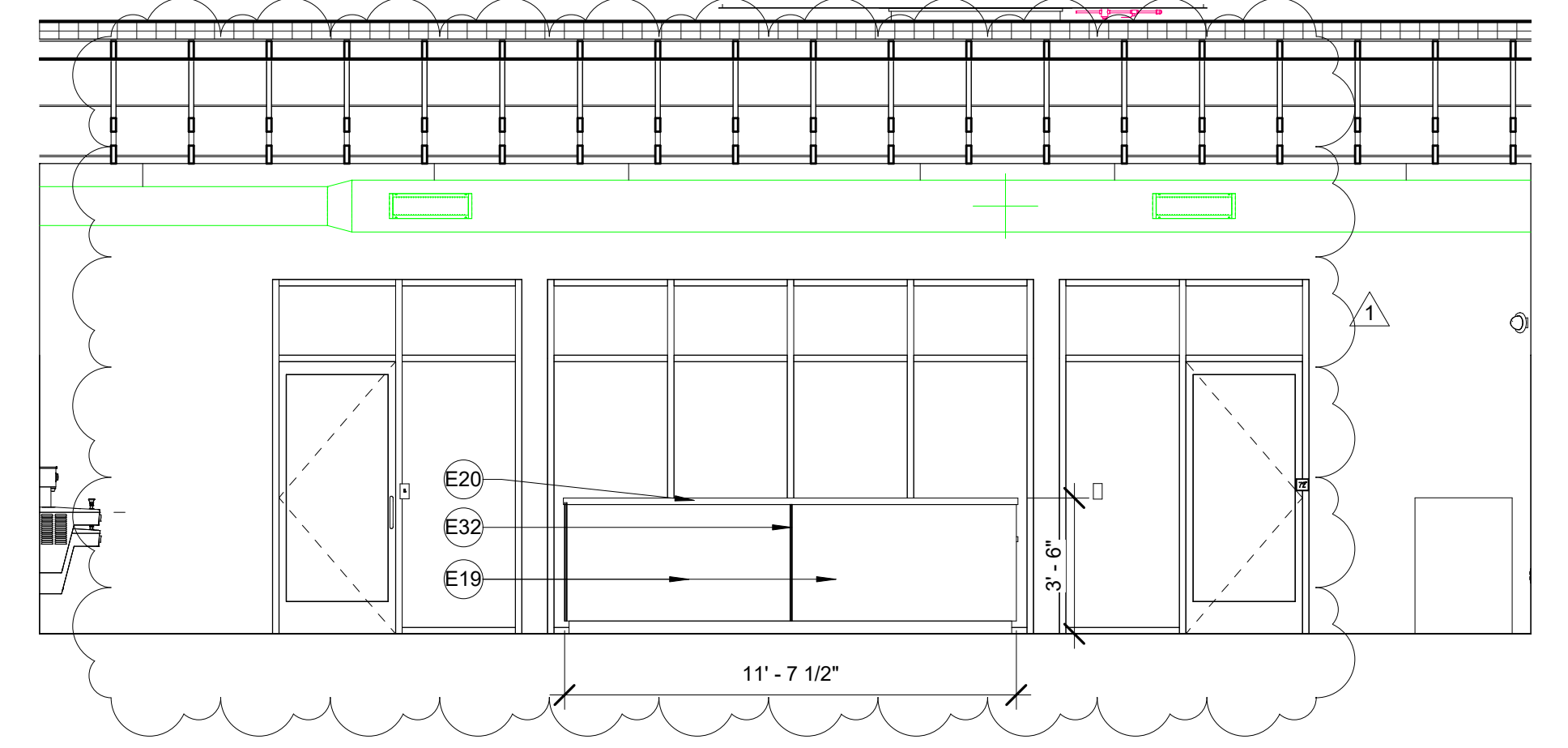
15 RETAIL - SOUTH ELEVATION
 A221 1/4" = 1'-0"



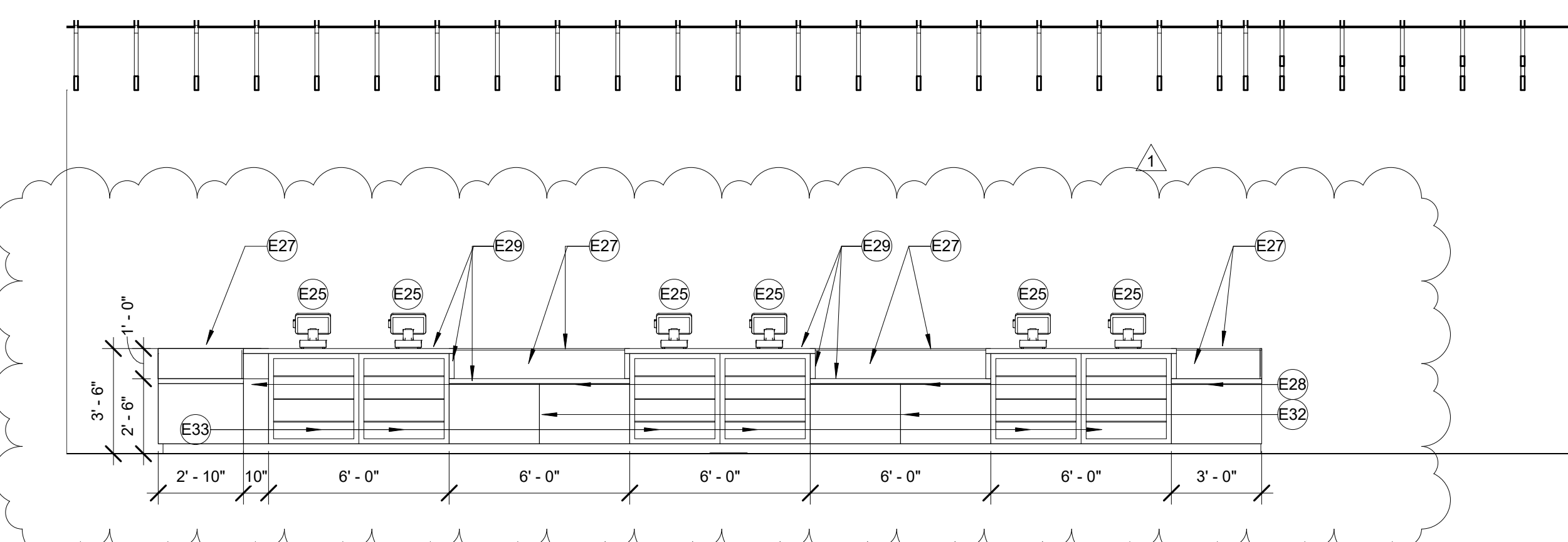
16 RETAIL - NORTH ELEVATION
 A221 1/4" = 1'-0"



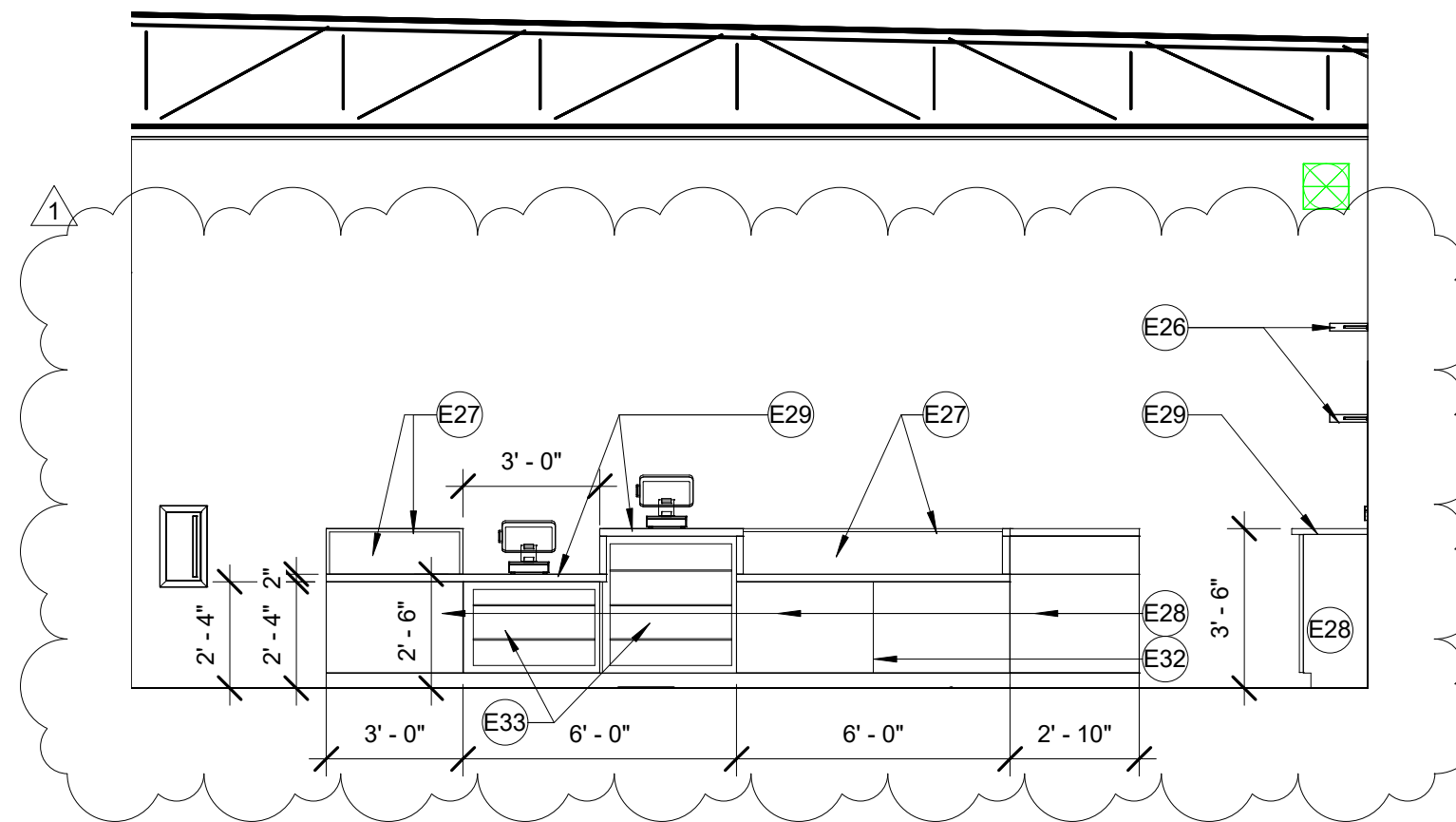
5 RECEPTION DESK SOUTH ELEVATION
 A221 1/4" = 1'-0"



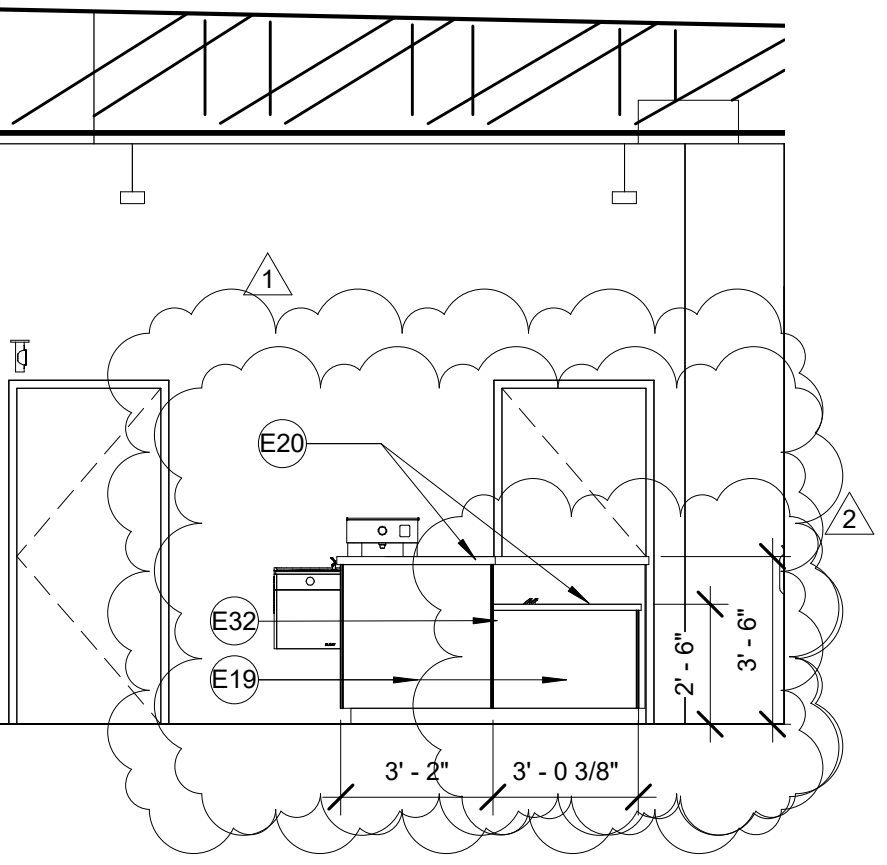
6 RECEPTION DESK - NORTH ELEVATION
 A221 1/4" = 1'-0"



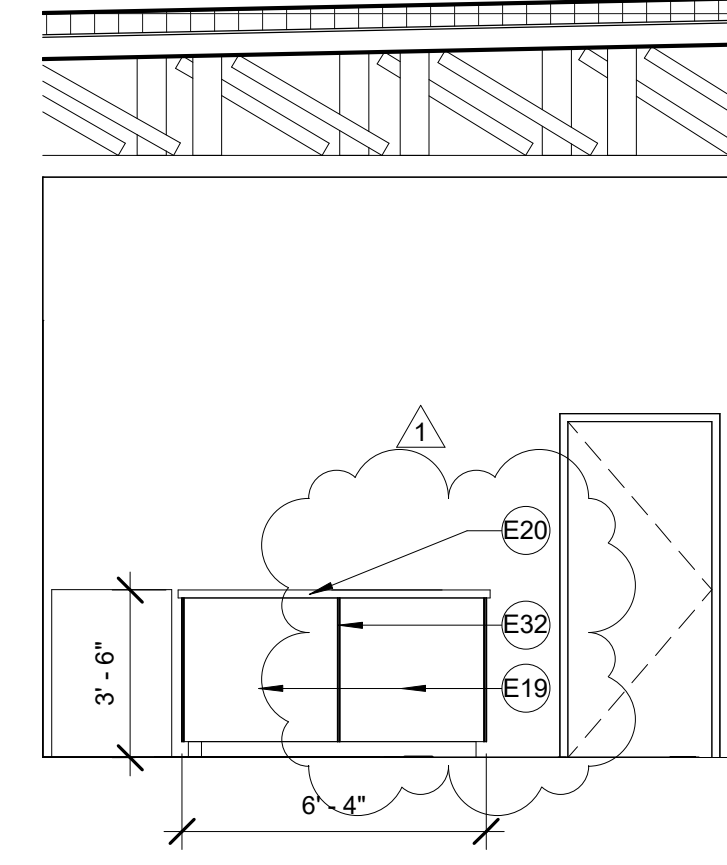
3 RETAIL DESK - SOUTH ELEVATION
 A221 1/4" = 1'-0"



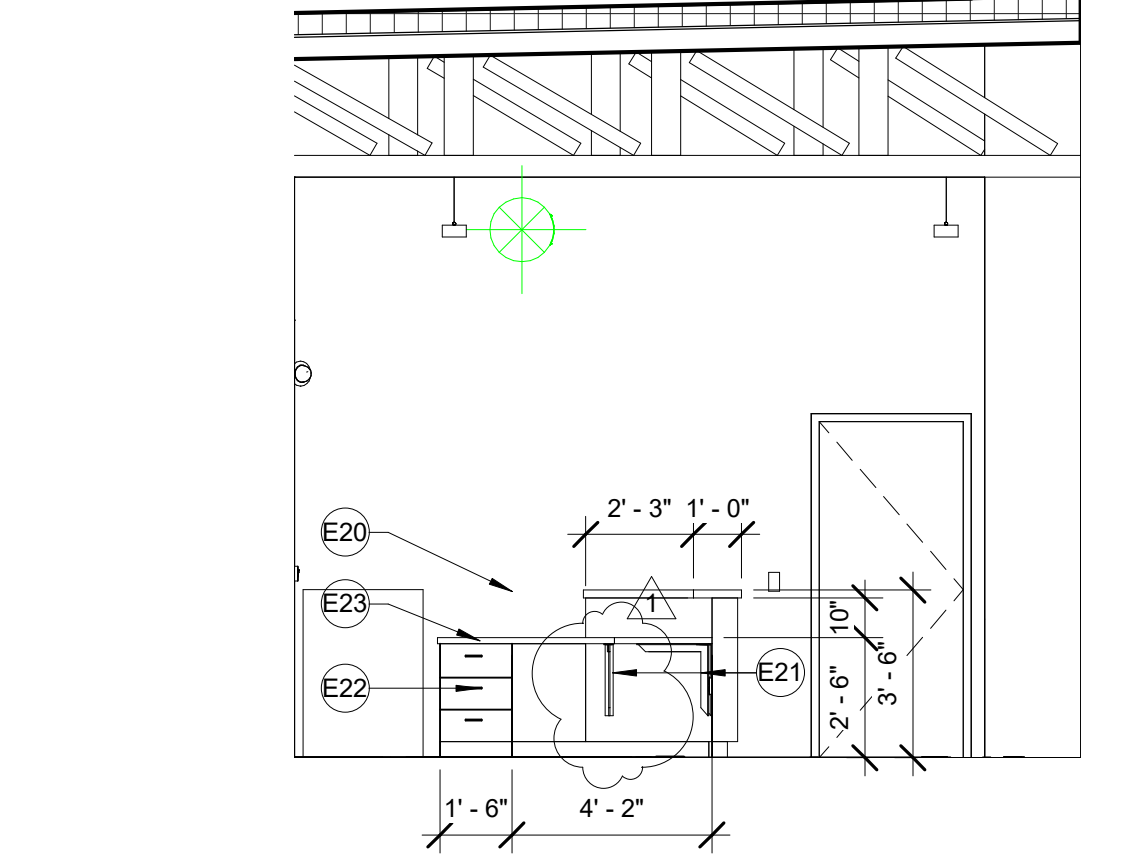
2 RETAIL DESK - WEST ELEVATION
 A221 1/4" = 1'-0"



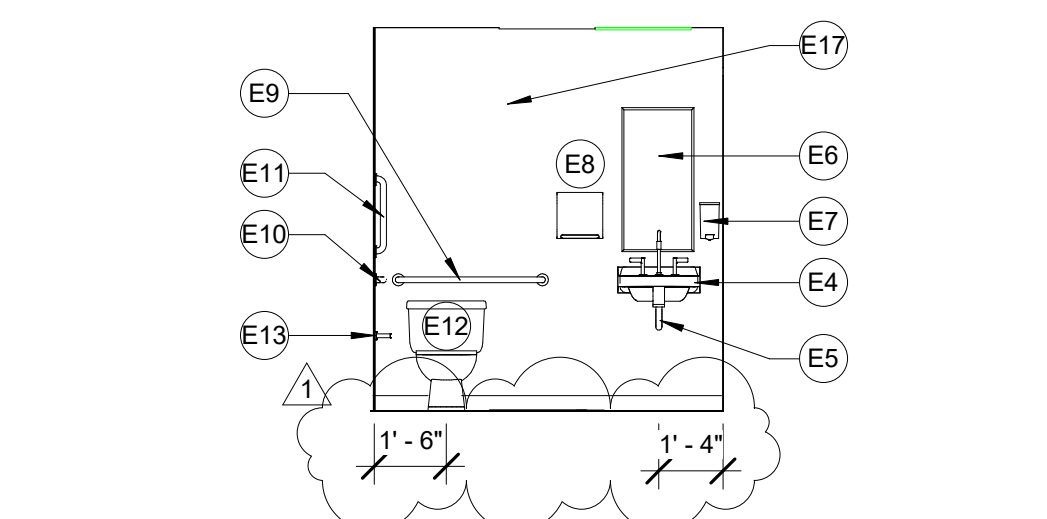
7 RECEPTION DESK - WEST ELEVATION
 A221 1/4" = 1'-0"



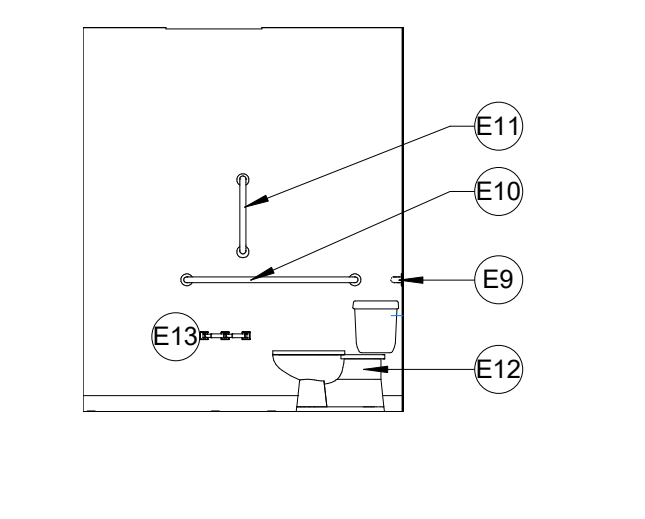
8 RECEPTION DESK - EAST ELEVATION
 A221 1/4" = 1'-0"



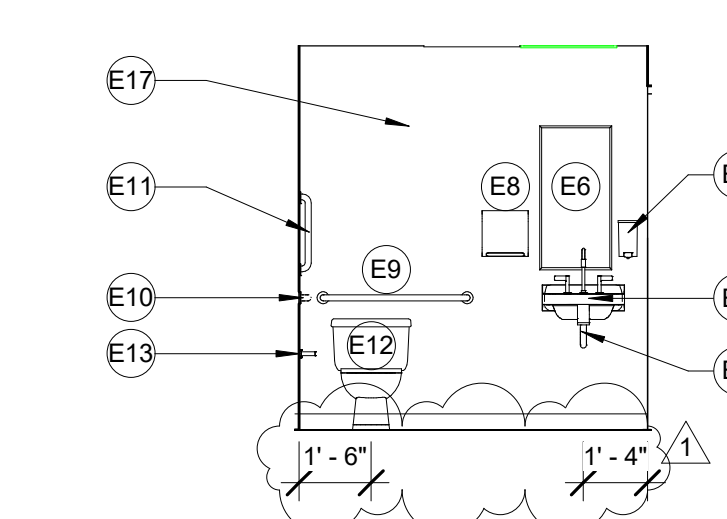
17 RECEPTION DESK - WEST DESK
 A221 1/4" = 1'-0"



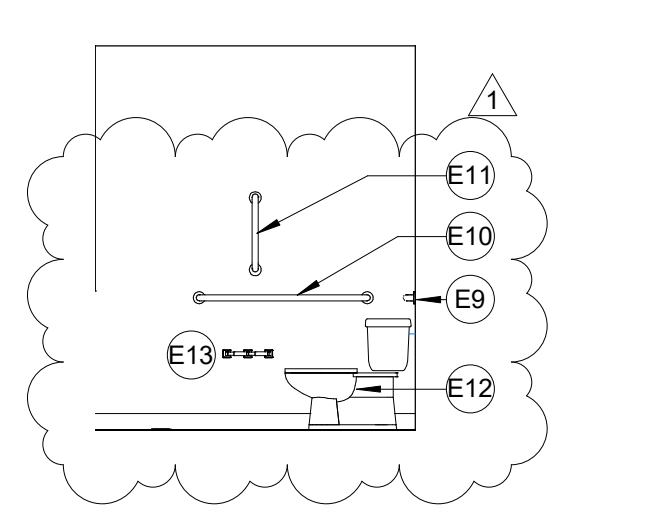
9 TOILET 108 - WEST ELEVATION
 A221 1/4" = 1'-0"



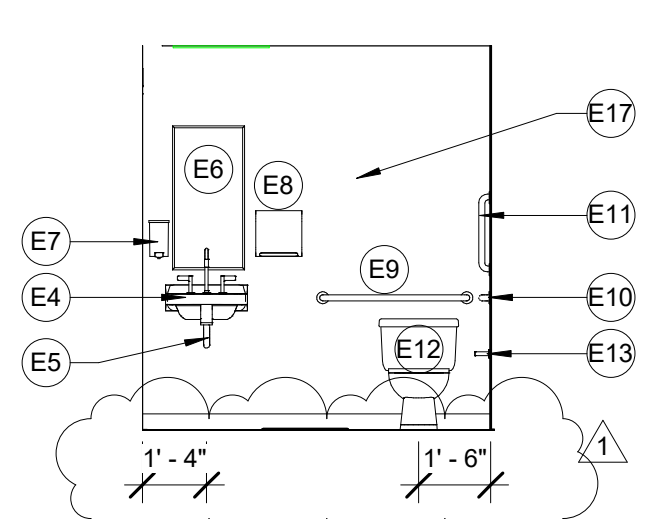
10 TOILET 108 - SOUTH ELEVATION
 A221 1/4" = 1'-0"



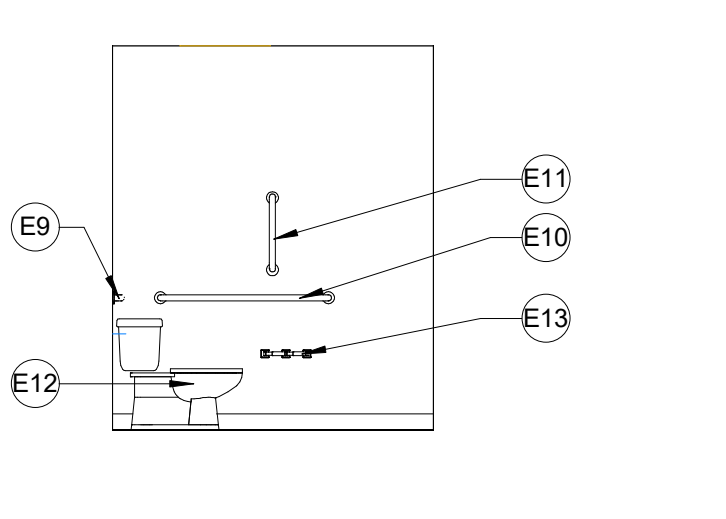
11 TOILET 102 - SOUTH ELEVATION
 A221 1/4" = 1'-0"



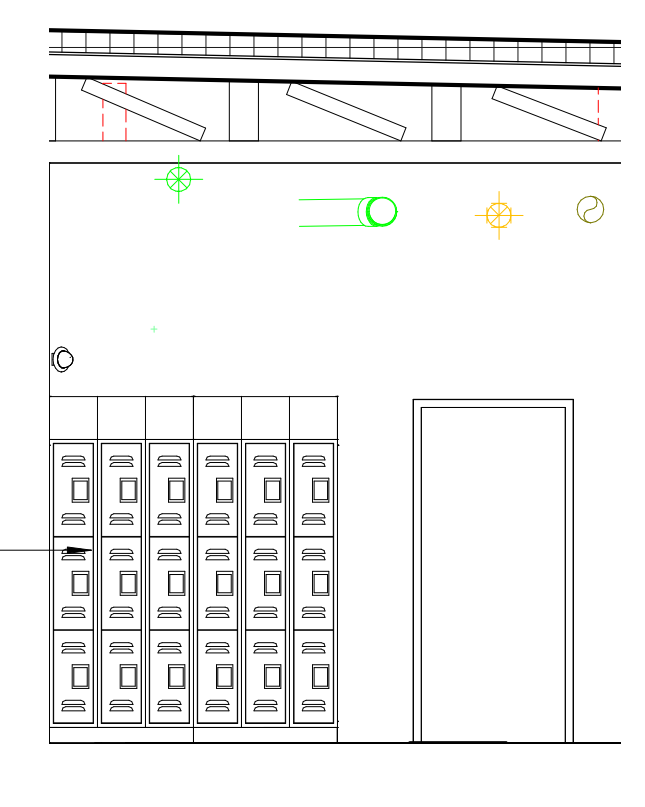
12 TOILET 102 - EAST ELEVATION
 A221 1/4" = 1'-0"



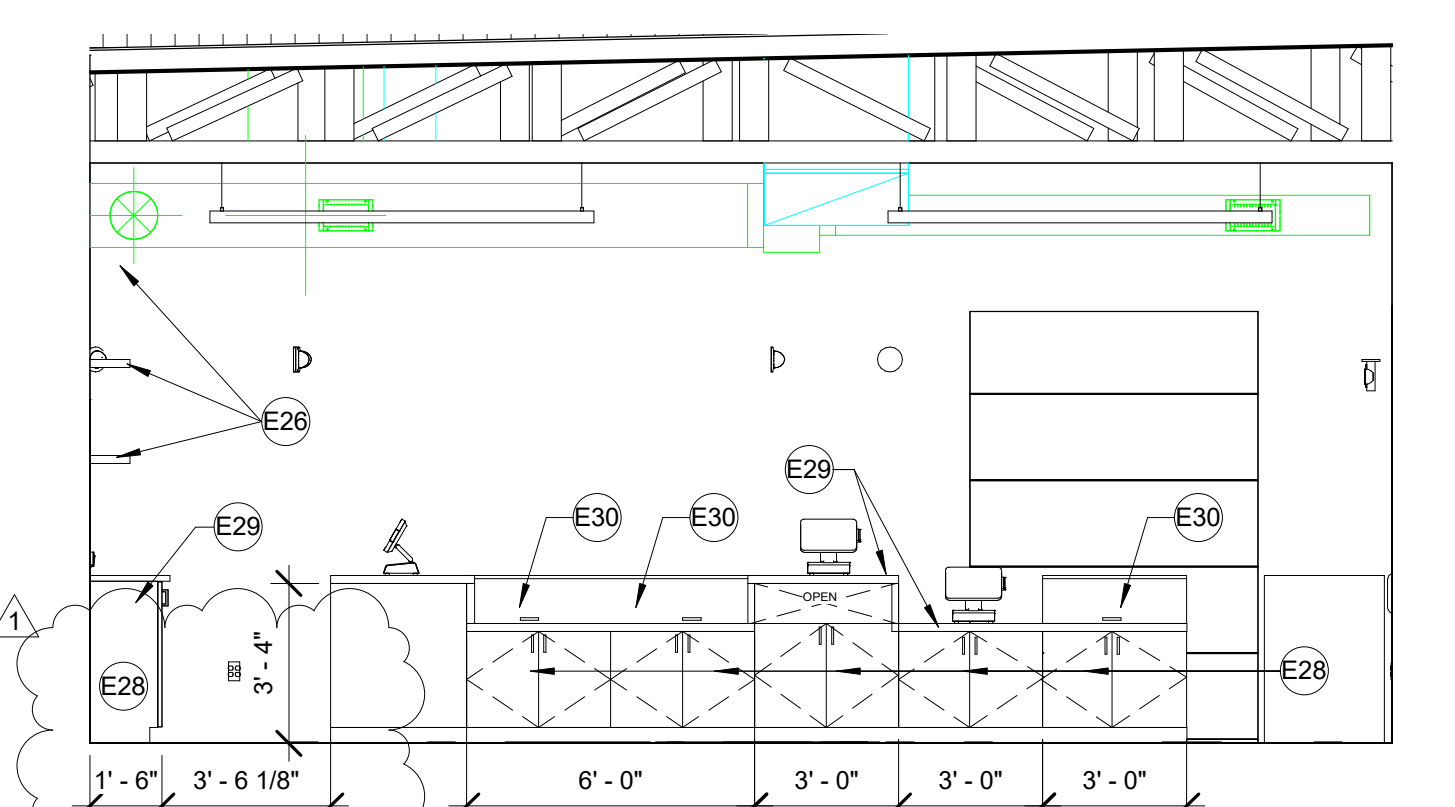
13 TOILET 103 - NORTH ELEVATION
 A221 1/4" = 1'-0"



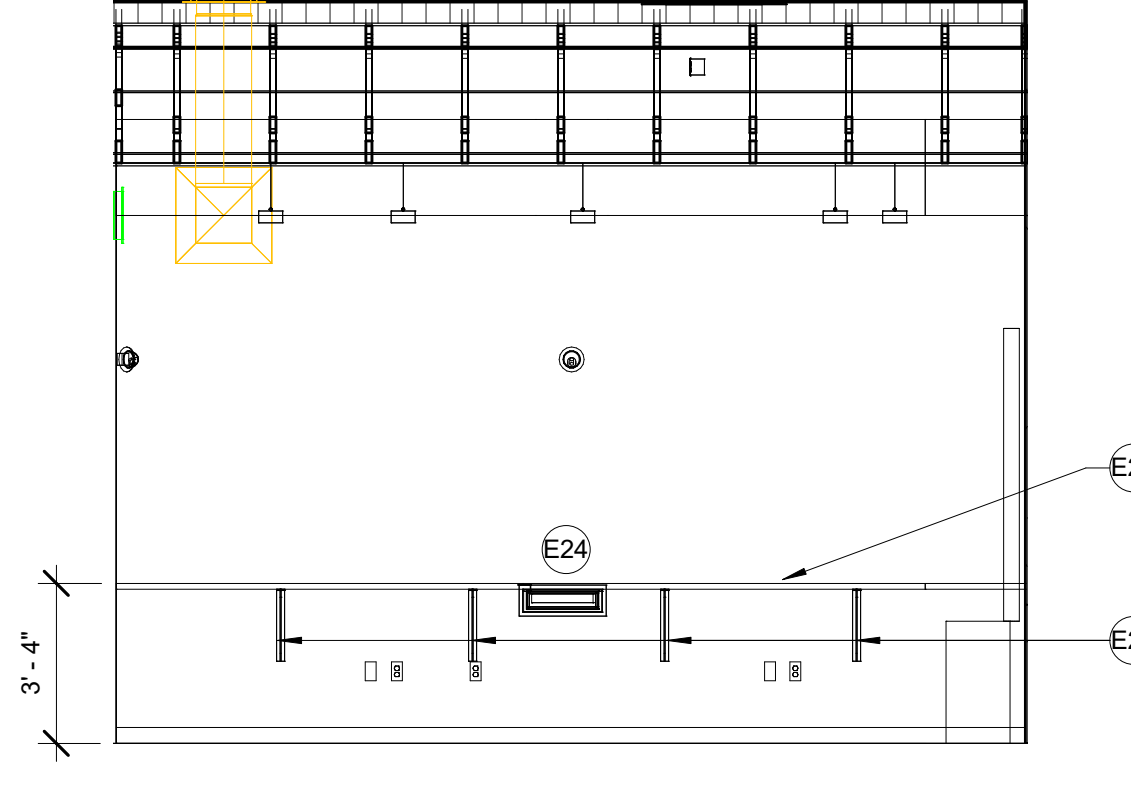
14 TOILET 1023 - EAST ELEVATION
 A221 1/4" = 1'-0"



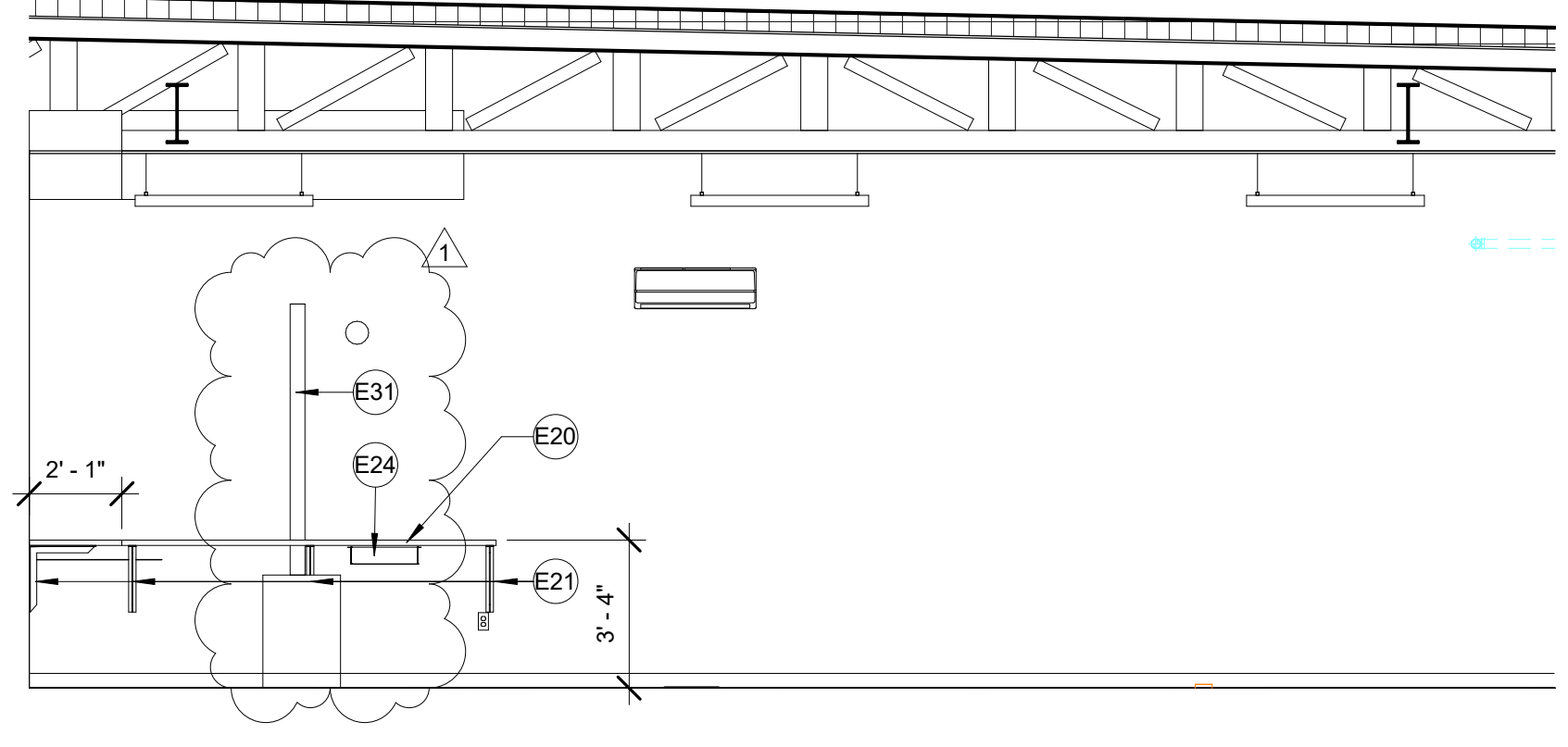
4 BREAKROOM 107 - EAST ELEVATION
 A221 1/4" = 1'-0"



18 RETAIL DESK - EAST ELEVATION
 A221 1/4" = 1'-0"



19 VAULT - NORTH WALL
 A221 1/4" = 1'-0"



20 VAULT - EAST ELEVATION
 A221 1/4" = 1'-0"

Revisions:

No.	Date:	Description:
1	2025-11-17	ADD. NO. 1
2	2025-11-24	ADD. NO. 2

Sheet Info:
 INTERIOR ELEVATIONS
 Drawn By: SE Coody
 Checked By: DGC
 Commission: 025-2130
 Date: 2025-11-07

A221

11/24/2025 3:38:05 PM