

End of Addendum

SECTION 083613 - SECTIONAL DOORS

PART 1 - GENERAL

1.1 SUMMARY

- A. Section Includes:
 - 1. Sectional-door assemblies.

1.2 ACTION SUBMITTALS

- A. Product Data: For each type and size of sectional door and accessory.
- B. Shop Drawings: For each installation and for components not dimensioned or detailed in manufacturer's product data.
- C. Samples: For each exposed product and for each color and texture specified.

1.3 INFORMATIONAL SUBMITTALS

- A. Sample warranties.

1.4 CLOSEOUT SUBMITTALS

- A. Maintenance data.

1.5 QUALITY ASSURANCE

- A. Installer Qualifications: An entity that employs installers and supervisors who are trained and approved by manufacturer for both installation and maintenance of units required for this Project.

1.6 WARRANTY

- A. Manufacturer's Warranty: Manufacturer agrees to repair or replace components of sectional doors that fail in materials or workmanship within specified warranty period.
 - 1. Warranty Period: **Five** years from date of Substantial Completion.
- B. Finish Warranty: Manufacturer agrees to repair or replace components that show evidence of deterioration of factory-applied finishes within specified warranty period.
 - 1. Warranty Period: **10** years from date of Substantial Completion.

PART 2 - PRODUCTS

2.1 PERFORMANCE REQUIREMENTS

- A. Structural Performance, Exterior Doors: Capable of withstanding the design wind loads.
 - 1. Design Wind Load: **As indicated on Drawings.**
- B. Windborne-Debris Impact Resistance: Provide sectional doors complying with the following requirements:
 - 1. Glazed Openings: Pass ASTM E1886 Large Missile Test and cyclic-pressure tests in accordance with ASTM E1996 for **basic** protection and Wind Zone .
 - 2. Garage-Door Glazed Openings: Pass DASMA 115.
- C. Seismic Performance: Provide sectional doors that withstand the effects of earthquake motions determined in accordance with **ASCE/SEI 7**.
 - 1. Component Importance Factor: **1.5**.

2.2 SECTIONAL-DOOR ASSEMBLY

- A. **Steel** Sectional Door: Provide sectional door formed with hinged sections and fabricated so that finished door assembly is rigid and aligned with tight hairline joints; free of warp, twist, and deformation; and complies with requirements in DASMA 102.
- B. Basis-of-Design Product: Subject to compliance with requirements, provide Clopay, Model 3722 or approved equal.
- C. Operation Cycles: Door components and operators capable of operating for not less than **100,000** operation cycles. One operation cycle is complete when door is opened from closed position to the open position and returned to closed position.
- D. Air Infiltration: Maximum rate of **0.4 cfm/sq. ft.** when tested in accordance with ASTM E283 or DASMA 105.
- E. U-Value: 0.19
- F. Steel Door Sections: ASTM A653/A653M, zinc-coated (galvanized), cold-rolled, commercial steel sheet with **G60** zinc coating.
 - 1. Door-Section Thickness: **2 inches** .
 - 2. Section Faces:
 - a. Thermal-Break Construction: Provide sections with continuous thermal-break construction separating the exterior and interior faces of door.
 - b. Exterior Face: Fabricated from single sheets, not more than **24 inches** high; with horizontal meeting edges rolled to continuous, interlocking, keyed, rabbeted, shiplap, or tongue-in-groove, weather- and pinch-resistant seals and reinforcing flange return.

- 1) Steel Sheet Thickness: 20 gauge nominal coated thickness.
 - 2) Surface: Manufacturer's standard, **stucco embossed**.
- c. Interior Face: Enclose insulation completely within steel exterior facing and interior facing material, with no exposed insulation. Provide the following interior-facing material:
- 1) Zinc-Coated (Galvanized) Steel Sheet: Manufacturer's standard..
 - 2) Plastic: **Manufacturer's standard vinyl material complying with DASMA 107 requirements..**
3. Thermal Insulation: Insulate interior of steel sections with door manufacturer's standard insulation of type indicated below:
- a. Board Insulation: **polyurethane**, secured to exterior face sheet.
 - b. Foamed-in-Place Insulation: Polyurethane, foamed in place to completely fill interior of section and pressure bonded to face sheets to prevent delamination under wind load.
 - c. Fire-Resistance Characteristics: Maximum flame-spread and smoke-developed indexes of 75 and 450, respectively, in accordance with ASTM E84.
- G. Track: Manufacturer's standard, galvanized-steel, **high-lift**] track system. Provide complete system including brackets, bracing, and reinforcement to ensure rigid support of ball-bearing roller guides.
1. Material: Galvanized steel, ASTM A653/A653M, minimum **G60** zinc coating.
 2. Size: **3 inches wide**.
 3. Track Reinforcement and Supports: Provide galvanized-steel members to support track without sag, sway, and vibration during opening and closing of doors. Slot vertical sections of track spaced **2 inches** apart for door-drop safety device.
 - a. Vertical Track: Incline vertical track to ensure weathertight closure at jambs.
 - b. Horizontal Track: Provide continuous reinforcing angle from curve in track to end of track, attached to track and supported at points by laterally braced attachments to overhead structural members.
- H. Weatherseals: Replaceable, adjustable, continuous, compressible weather-stripping gaskets of flexible vinyl, rubber, or neoprene fitted to bottom **top and jambs** of door.
- I. Windows: Manufacturer's standard window units of shape and size and in locations indicated on Drawings. Set glazing in vinyl, rubber, or neoprene glazing channel. Provide removable stops of same material as door-section frames. Provide the following glazing:
1. Insulating Glass Units: **Manufacturer's standard**.
 - a. Color: Gray or Broze (To Be Determined).
 2. Window Option: Aluminum Full-View Windows.
- J. Hardware: Heavy-duty, corrosion-resistant hardware, with hot-dip galvanized, stainless steel, or other corrosion-resistant fasteners, to suit door type.

1. Hinges: Heavy-duty, galvanized-steel hinges of not less than **0.079-inch** nominal coated thickness at each end stile and at each intermediate stile, in accordance with manufacturer's written recommendations for door size.
 - a. Attach hinges to door sections through stiles and rails with bolts and lock nuts or lock washers and nuts. Use rivets or self-tapping fasteners where access to nuts is impossible.
2. Rollers: Heavy-duty rollers with steel ball bearings in case-hardened steel races, mounted to suit slope of track. Extend roller shaft through both hinges where double hinges are required. Match roller-tire diameter to track width.
 - a. Roller-Tire Material: **Manufacturer's standard.**
3. Push/Pull Handles: Equip each door with galvanized-steel lifting handles on each side of door, finished to match door.

K. Locking Device:

1. Slide Bolt: Fabricate with side-locking bolts to engage through slots in tracks for locking by padlock, located on single-jamb side, operable from inside only.
2. Locking Device Assembly: Fabricate with cylinder lock, spring-loaded deadbolt, operating handle, cam plate, and adjustable locking bars to engage through slots in tracks.
 - a. Lock Cylinders: Cylinders **standard with manufacturer.**
 - b. Keying: **Keyed to building keying system.**
 - c. Keys: **Three** for each cylinder.
3. Chain Lock Keeper: Suitable for padlock.
4. Safety Interlock Switch: Equip power-operated doors with safety interlock switch to disengage power supply when door is locked.

L. Counterbalance Mechanism:

1. Torsion Spring: Adjustable-tension torsion springs complying with requirements of DASMA 102 for number of operation cycles indicated, mounted on torsion shaft.
2. Cable Drums and Shaft for Doors: Cast-aluminum cable drums mounted on torsion shaft and grooved to receive door-lifting cables as door is raised.
 - a. Mount counterbalance mechanism with manufacturer's standard ball-bearing brackets at each end of torsion shaft.
3. Cables: Galvanized-steel, multistrand, lifting cables.
4. Cable Safety Device: Include a spring-loaded steel or bronze cam mounted to bottom door roller assembly on each side and designed to automatically stop door if lifting cable breaks.
5. Bracket: Provide anchor support bracket as required to connect stationary end of spring to the wall and to level the shaft and prevent sag.
6. Bumper: Provide spring bumper at each horizontal track to cushion door at end of opening operation.

- M. Electric Door Operator: Electric door operator assembly of size and capacity recommended by door manufacturer for door and operation cycles specified, with electric motor and factory-prewired motor controls, starter, gear-reduction unit, solenoid-operated brake, clutch, control stations, control devices, integral gearing for locking door, and accessories required for proper operation.
1. Comply with NFPA 70.
 2. Control equipment complying with NEMA ICS 1, NEMA ICS 2, and NEMA ICS 6; with NFPA 70, Class 2 control circuit, maximum 24 V ac or dc.
 3. Safety: Listed in accordance with UL 325 by a qualified testing agency for commercial or industrial use[; **moving parts of operator enclosed or guarded if exposed and mounted at 8 ft. or lower.**
 4. Usage Classification: **Heavy duty, 25 or more cycles per hour and more than 90 cycles per day.**
 5. Operator Type: **Manufacturer's standard for door requirements.**
 6. Motor: Reversible-type [**with controller (disconnect switch)**] for [interior, clean, and dry] [exterior, dusty, wet, or humid] <Insert requirements> motor exposure. Use adjustable motor-mounting bases for belt-driven operators.
 - a. Motor Size: **As required to start, accelerate, and operate door in either direction from any position, at a speed not less than 24 in./secopening speed and 15 in/sec speed.**
 - b. Electrical Characteristics:
 - 1) Phase: **Single phase.**
 - 2) Volts: **115/230V.**
 7. Limit Switches: Equip motorized door with adjustable switches interlocked with motor controls and set to automatically stop door at fully opened and fully closed positions.
 8. Obstruction Detection: Automatic external entrapment protection consisting of automatic safety sensor capable of protecting full width of door opening. Activation of device immediately stops and reverses downward door travel.
 - a. Monitored Entrapment Protection: **Photoelectric sensor** designed to interface with door-operator control circuit to detect damage to or disconnection of sensor and complying with requirements in UL 325.
 - b. Unmonitored Entrapment Protection: **Retro-reflective photo sensor.**
 9. Control Station: **Surface** mounted, **three-position (open, close, and stop)** control.
 - a. Operation: **Push button interior.**
 - b. Interior-Mounted Unit: Full-guarded, surface-mounted, **heavy-duty type, with general-purpose NEMA ICS 6, Type 1** enclosure.
 - c. Features: Provide the following:
 - 1) Radio-control operation.
 - 2) Photocell operation.
 - 3) Door-timer operation.
 10. Emergency Manual Operation: **Chain** type designed so required force for door operation does not exceed **25 lbf** .

11. Emergency Operation Disconnect Device: Hand-operated disconnect mechanism for automatically engaging manual operator and releasing brake for emergency manual operation while disconnecting motor without affecting timing of limit switch. Mount mechanism so it is accessible from floor level. Include interlock device to automatically prevent motor from operating when emergency operator is engaged.
 12. Motor Removal: Design operator so motor can be removed without disturbing limit-switch adjustment and without affecting emergency manual operation.
- N. Metal Finish:
1. Baked-Enamel or Powder-Coat Finish: Manufacturer's standard baked-on finish consisting of prime coat and thermosetting topcoat.
 - a. Color and Gloss: Clopay "Color Blast" custom paint option, as selected by Owner from full line of colors, or approved equal.

PART 3 - EXECUTION

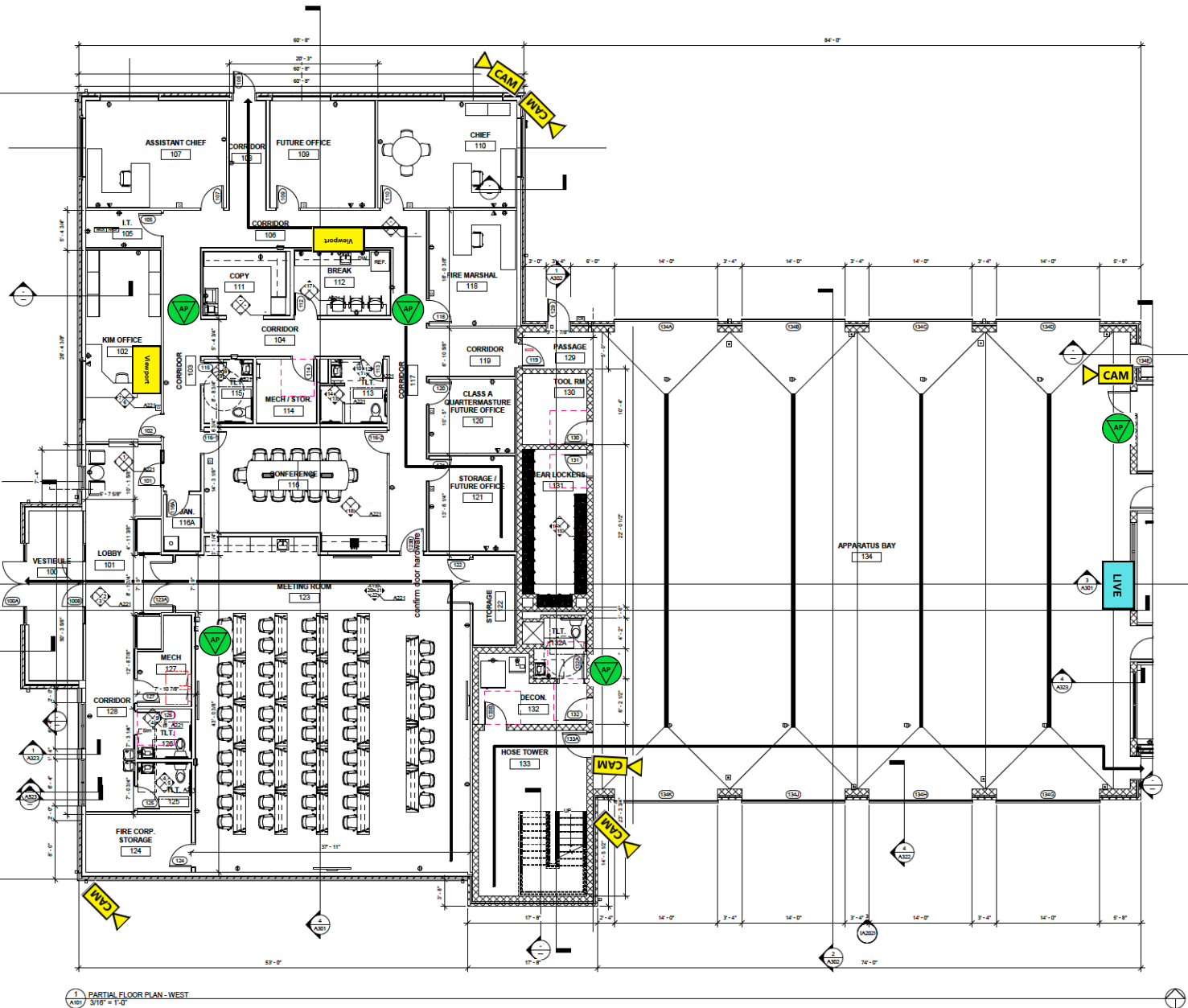
3.1 INSTALLATION

- A. Install sectional doors and operating equipment complete with necessary hardware, anchors, inserts, hangers, and equipment supports; in accordance with manufacturer's written instructions.
- B. Tracks:
 1. Fasten vertical track assembly to opening jambs and framing with fasteners spaced not more than **24 inches** apart.
 2. Hang horizontal track assembly from structural overhead framing with angles or channel hangers attached to framing by welding or bolting, or both. Provide sway bracing, diagonal bracing, and reinforcement as required for rigid installation of track and door-operating equipment.
- C. Accessibility: Install sectional doors, switches, and controls along accessible routes in compliance with regulatory requirements for accessibility.

3.2 DEMONSTRATION

- A. Engage a factory-authorized service representative to train Owner's maintenance personnel to adjust, operate, and maintain sectional doors.

END OF SECTION 083613



1 PARTIAL FLOOR PLAN - WEST
 (A/B) 3/16 = 1/4"

WRIGHT CITY FIRE

STATION 1 West

**090225
 VER 2**

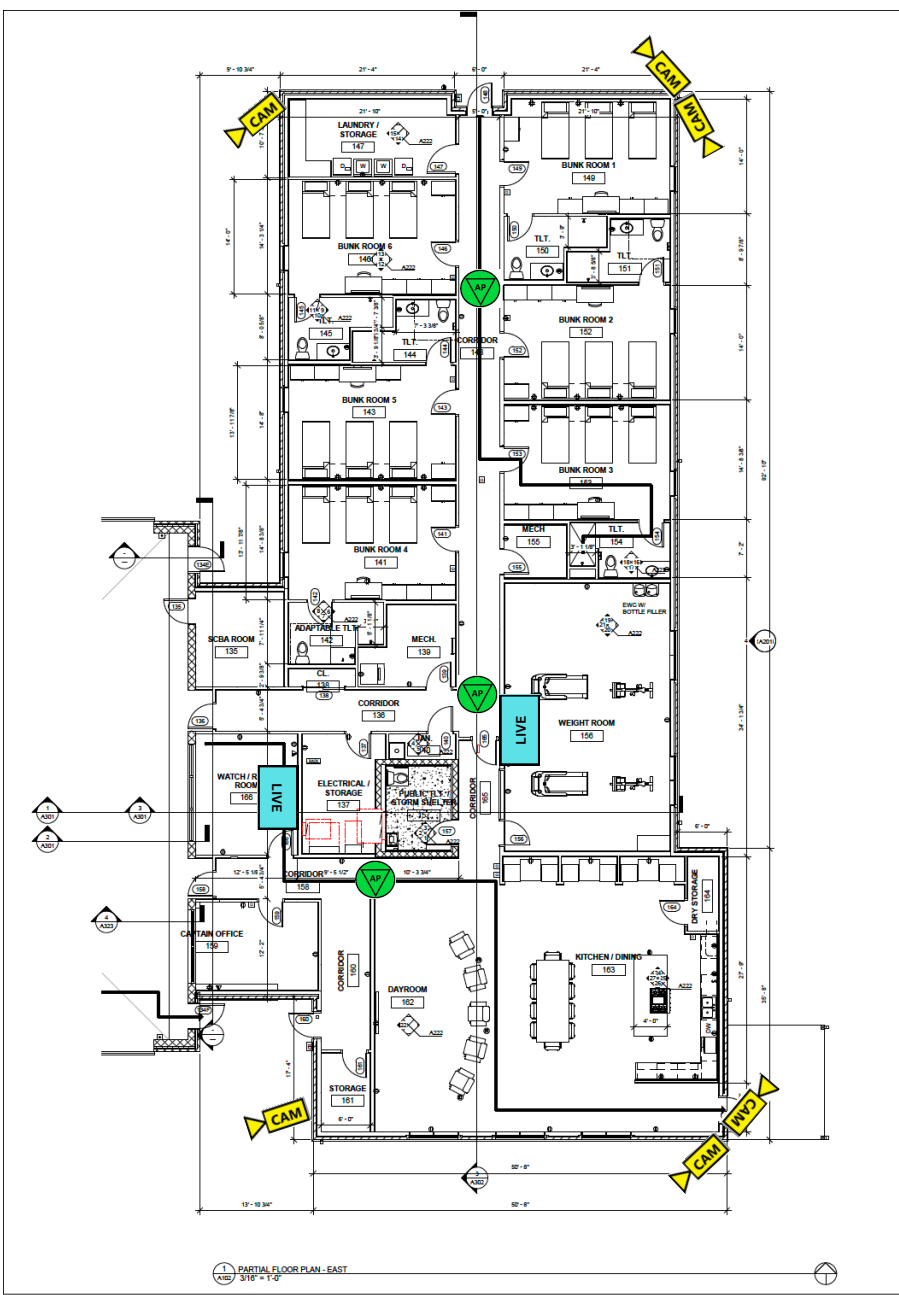
**CAMERAS
 AND
 NETWORK**

- CR** Card Reader
- KR** Keypad Reader
- DC** Door Contact
- INT** Intercom/ Viewer

- 1** Cat6 Wall Jack
- 2** Cat6 Wall Dual
- 4** Cat6 Wall Quad
- AP** Access Point
- FLOOR** Cat6 Floor Dual
- FLOOR** Cat6 Floor Quad
- MDF** Main Data Closet
- IDF1** Addtl Data Closet

- CAM** Dome / Bullet Camera
- FISH EYE** FishEye 360 Camera
- Viewport** Viewport Camera Viewing
- LIVE** LiveDash

- S** Speaker
- Coax Jack**
- TV** Television
- SC** Conference Camera
- vol** Volume Control
- AC** Audio Controller
- RC** Room Controller



WRIGHT CITY FIRE

STATION 1 EAST

090225
VER 2

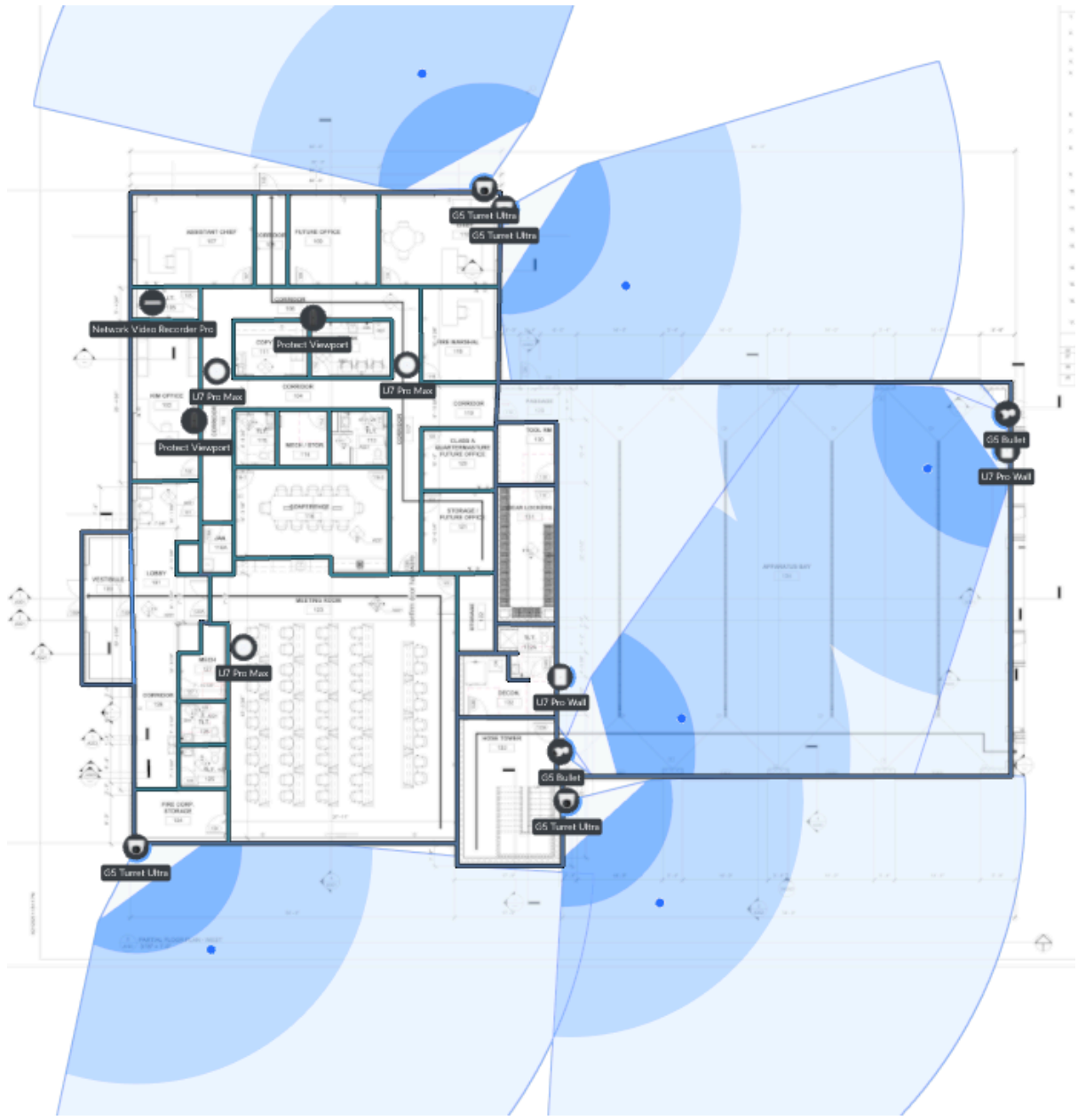
CAMERAS AND NETWORK

- CR** Card Reader
- KR** Keypad Reader
- DC** Door Contact
- PR** Pro Reader
- INT** Intercom/ Viewer

- 1** Cat6 Wall Jack
- 2** Cat6 Wall Dual
- 4** Cat6 Wall Quad
- AP** Access Point
- FLOOR** Cat6 Floor Dual
- FLOOR** Cat6 Floor Quad
- MDF** Main Data Closet
- IDF1** Addtl Data Closet

- CAM** Dome / Bullet Camera
- FISH EYE** FishEye 360 Camera
- Viewport** Viewport Camera Viewing
- LIVE** LiveDash

- S** Speaker
- Coax Jack**
- TV** Television
- CC** Conference Camera
- vol** Volume Control
- AC** Audio Controller
- RC** Room Controller



WRIGHT CITY FIRE
STATION 1 WEST

090225
VER 2

CAMERA COVERAGE

- CR** Card Reader
- KR** Keypad Reader
- DC** Door Contact
- INT** Intercom/ Viewer

- 1** Cat6 Wall Jack
- 2** Cat6 Wall Dual
- 4** Cat6 Wall Quad
- AP** Access Point
- FLOOR** Cat6 Floor Dual
- FLOOR** Cat6 Floor Quad
- MDF** Main Data Closet
- IDF1** Addtl Data Closet

- CAM** Dome / Bullet Camera
- FISH EYE** FishEye 360 Camera
- Viewport** Viewport Camera Viewing

- S** Speaker
- Coax Jack**
- TV** Television
- SC** Conference Camera
- VOL** Volume Control
- AC** Audio Controller
- RC** Room Controller



WRIGHT CITY FIRE

STATION 1 EAST

090225
VER 2

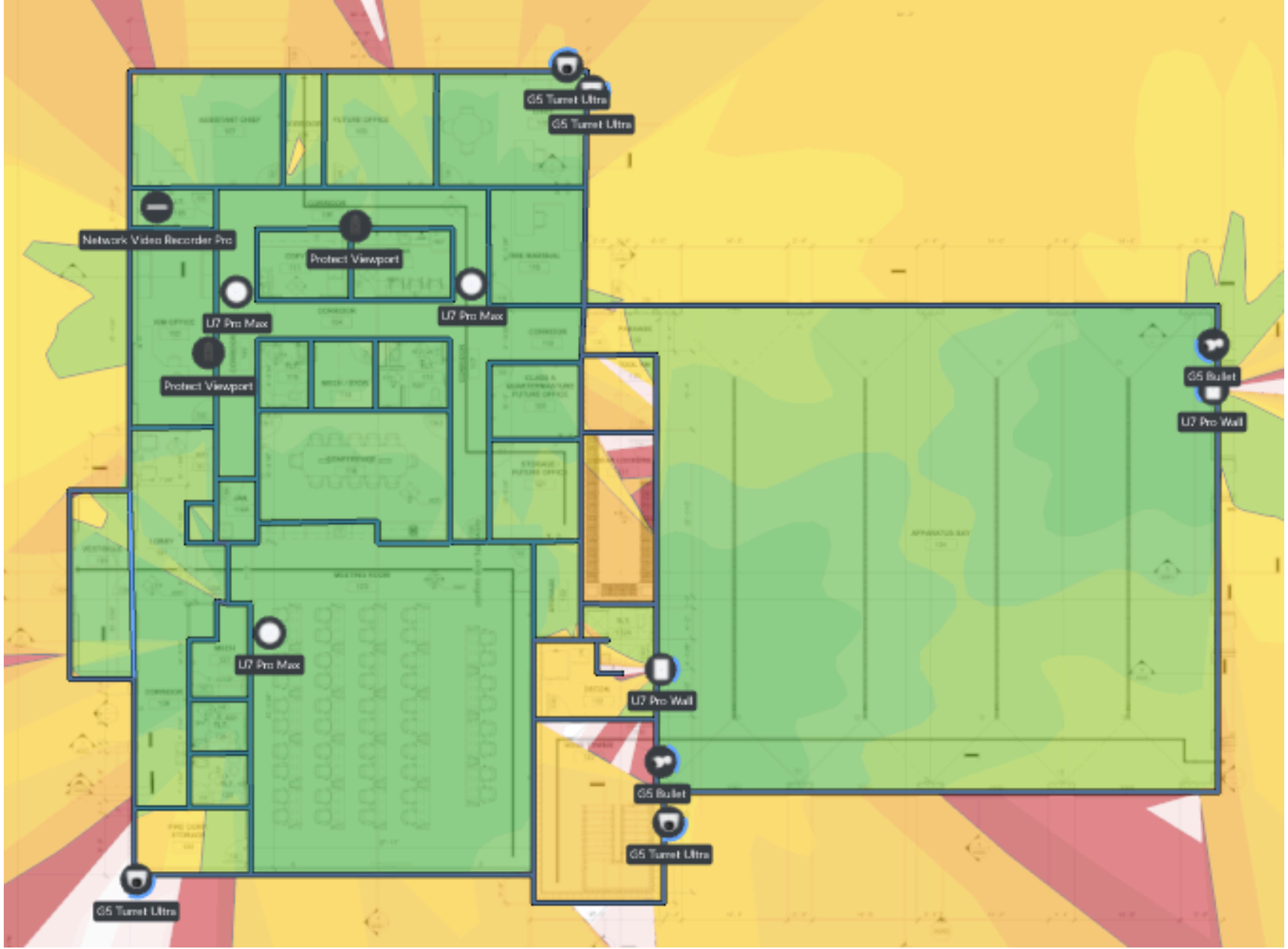
CAMERA COVERAGE

- CR** Card Reader
- KR** Keypad Reader
- DC** Door Contact
- PR** Pro Reader
- INT** Intercom/ Viewer

- 1** Cat6 Wall Jack **FLOOR** Cat6 Floor Dual
- 2** Cat6 Wall Dual **FLOOR** Cat6 Floor Quad
- 4** Cat6 Wall Quad **MDF** Main Data Closet
- AP** Access Point **IDF1** Addtl Data Closet

- CAM** Dome / Bullet Camera
- FISH EYE** FishEye 360 Camera
- Viewport** Viewport Camera Viewing

- S** Speaker **VOL** Volume Control
- C** Coax Jack **AC** Audio Controller
- TV** Television **RC** Room Controller
- CC** Conference Camera



WRIGHT CITY FIRE
STATION 1 WEST

090225
VER 2

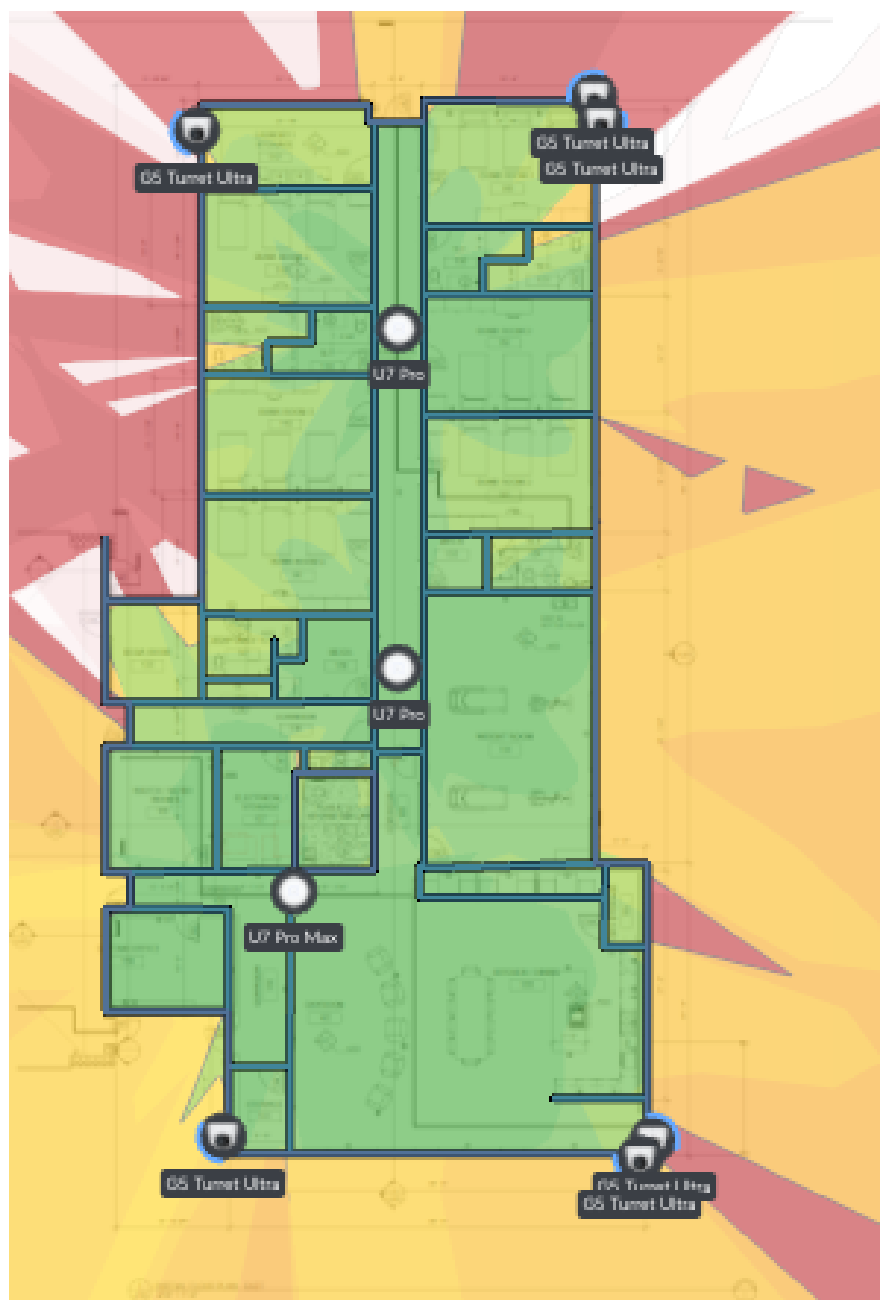
WIFI COVERAGE

- CR** Card Reader
- KR** Keypad Reader
- DC** Door Contact
- INT** Intercom/ Viewer

- 1** Cat6 Wall Jack
- 2** Cat6 Wall Dual
- 4** Cat6 Wall Quad
- AP** Access Point
- FLOOR** Cat6 Floor Dual
- FLOOR** Cat6 Floor Quad
- MDF** Main Data Closet
- IDF1** Addtl Data Closet

- CAM** Dome / Bullet Camera
- FISH EYE** FishEye 360 Camera
- Viewport** Viewport Camera Viewing

- S** Speaker
- vol** Volume Control
- C** Coax Jack
- AC** Audio Controller
- TV** Television
- RC** Room Controller
- CC** Conference Camera



WRIGHT CITY FIRE

STATION 1 EAST

090225
VER 2

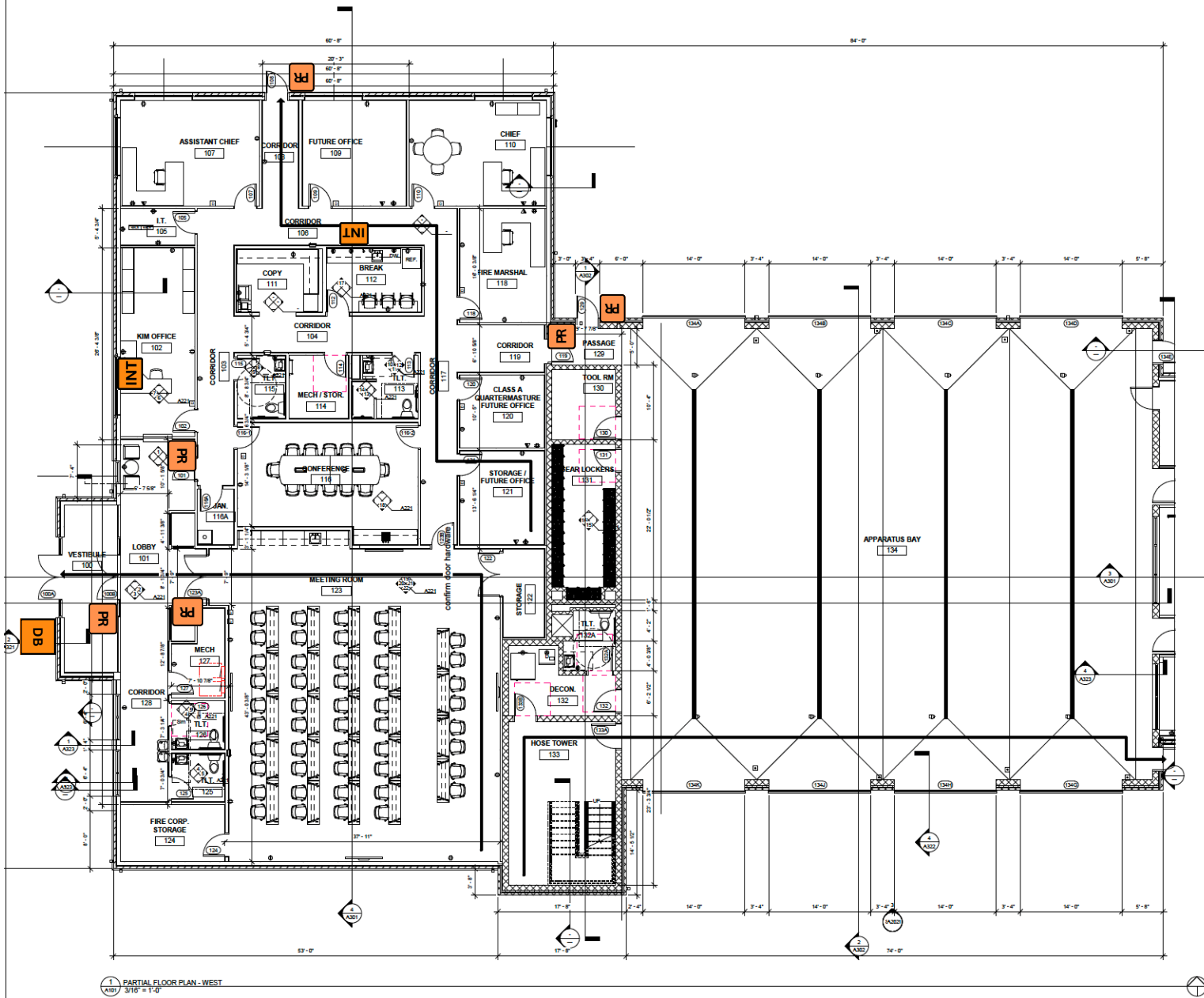
WiFi COVERAGE

- CR** Card Reader
- KR** Keypad Reader
- DC** Door Contact
- PR** Pro Reader
- INT** Intercom/ Viewer

- 1** Cat6 Wall Jack **FLOOR** Cat6 Floor Dual
- 2** Cat6 Wall Dual **FLOOR** Cat6 Floor Quad
- 4** Cat6 Wall Quad **MDF** Main Data Closet
- AP** Access Point **IDF1** Addtl Data Closet

- CAM** Dome / Bullet Camera
- FISH EYE** FishEye 360 Camera
- Viewport** Viewport Camera Viewing

- S** Speaker **VOL** Volume Control
- C** Coax Jack **AC** Audio Controller
- TV** Television **RC** Room Controller
- CC** Conference Camera



WRIGHT CITY FIRE

STATION 1 West

090225
VER 2

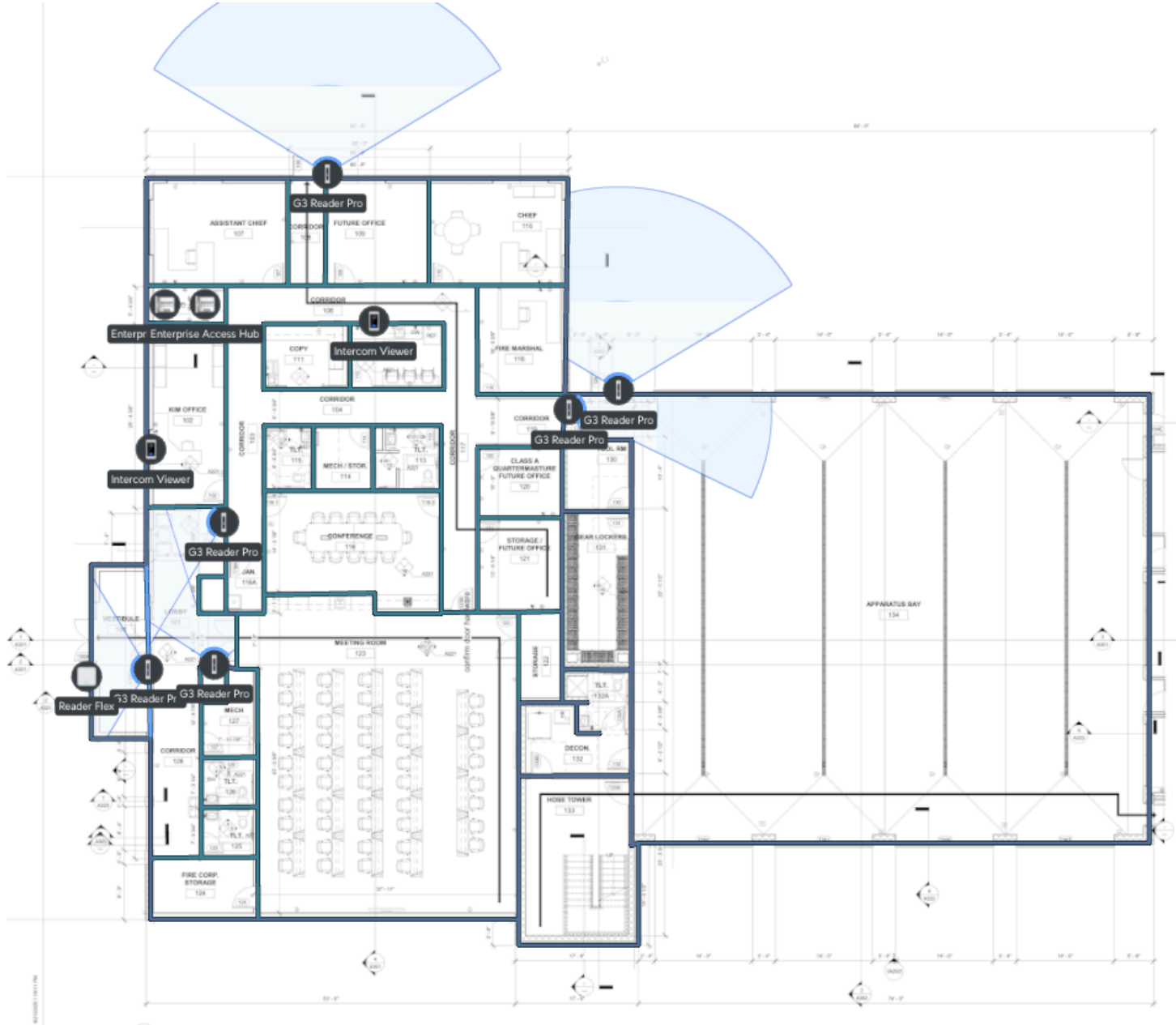
Door Access

- CR** Card Reader
- KR** Keypad Reader
- PR** Pro Reader
- INT** Intercom/ Viewer
- DB** Door Bell

- 1** Cat6 Wall Jack
- 2** Cat6 Wall Dual
- 4** Cat6 Wall Quad
- AP** Access Point
- FLOOR** Cat6 Floor Dual
- FLOOR** Cat6 Floor Quad
- MDF** Main Data Closet
- IDF1** Addtl Data Closet

- CAM** Dome / Bullet Camera
- FISH EYE** FishEye 360 Camera
- Viewport** Viewport Camera Viewing

- S** Speaker
- Coax Jack**
- TV** Television
- GC** Conference Camera
- VOL** Volume Control
- AC** Audio Controller
- RC** Room Controller



WRIGHT CITY FIRE

STATION 1 WEST

090225
VER 2

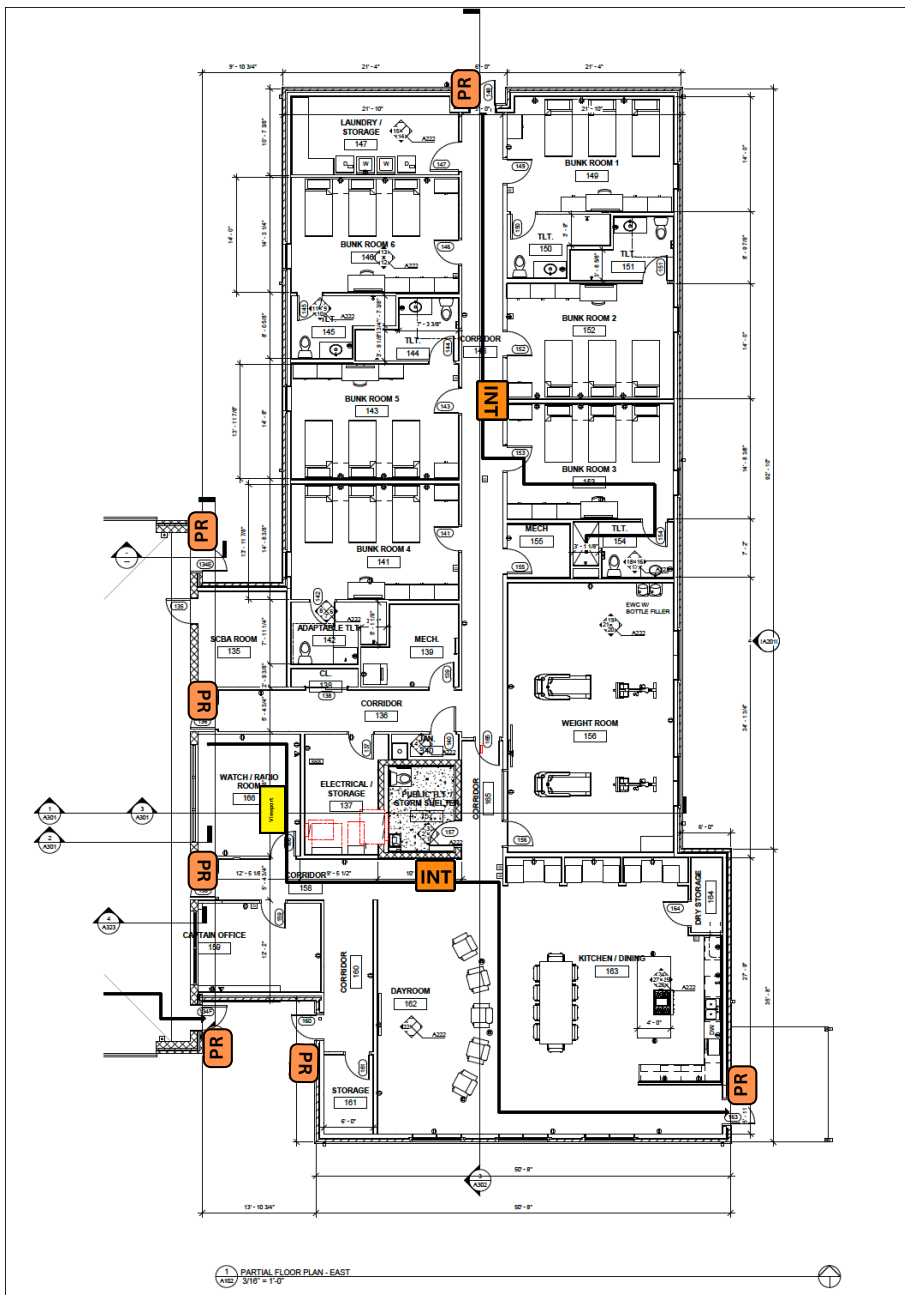
UniFi Door Plan

- CR** Card Reader
- KR** Keypad Reader
- DC** Door Contact
- PR** Pro Reader
- INT** Intercom/ Viewer

- 1** Cat6 Wall Jack
- 2** Cat6 Wall Dual
- 4** Cat6 Wall Quad
- AP** Access Point
- FLOOR** Cat6 Floor Dual
- FLOOR** Cat6 Floor Quad
- MDF** Main Data Closet
- IDF1** Addtl Data Closet

- CAM** Dome / Bullet Camera
- FISH EYE** FishEye 360 Camera
- Viewport** Viewport Camera Viewing

- S** Speaker
- Coax Jack** Coax Jack
- TV** Television
- CC** Conference Camera
- vol** Volume Control
- AC** Audio Controller
- RC** Room Controller



100 PARTIAL FLOOR PLAN - EAST
 A10 3/16" = 1'-0"

WRIGHT CITY FIRE

STATION 1 EAST

090225
 VER 2

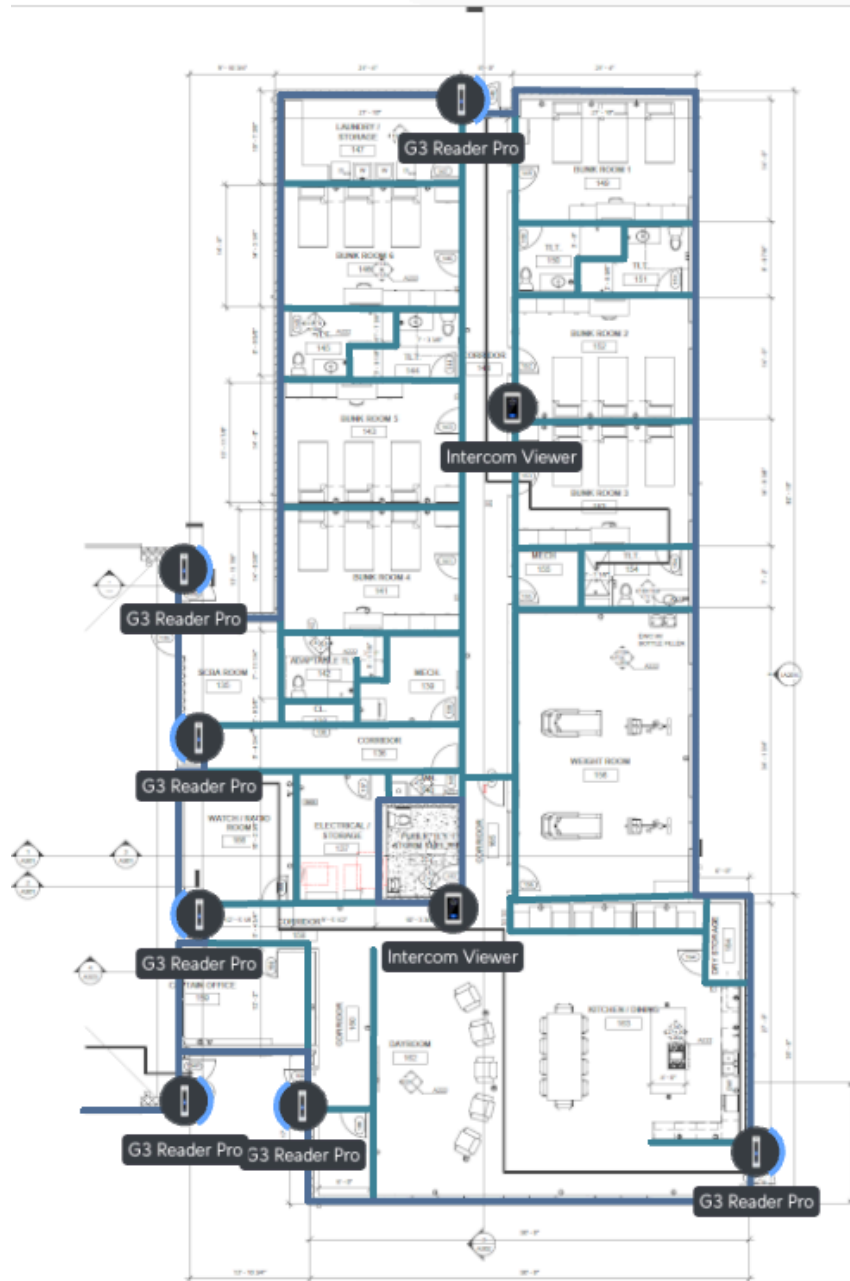
Door Access

- CR** Card Reader
- KR** Keypad Reader
- DC** Door Contact
- PR** Pro Reader
- INT** Intercom/ Viewer

- 1** Cat6 Wall Jack
- 2** Cat6 Wall Dual
- 4** Cat6 Wall Quad
- AP** Access Point
- FLOOR** Cat6 Floor Dual
- FLOOR** Cat6 Floor Quad
- MDF** Main Data Closet
- IDF1** Addtl Data Closet

- CAM** Dome / Bullet Camera
- FISH EYE** FishEye 360 Camera
- Viewport** Viewport Camera Viewing

- S** Speaker
- vol** Volume Control
- C** Coax Jack
- AC** Audio Controller
- TV** Television
- RC** Room Controller
- CC** Conference Camera



WRIGHT CITY FIRE

STATION 1 EAST

090225
VER 2

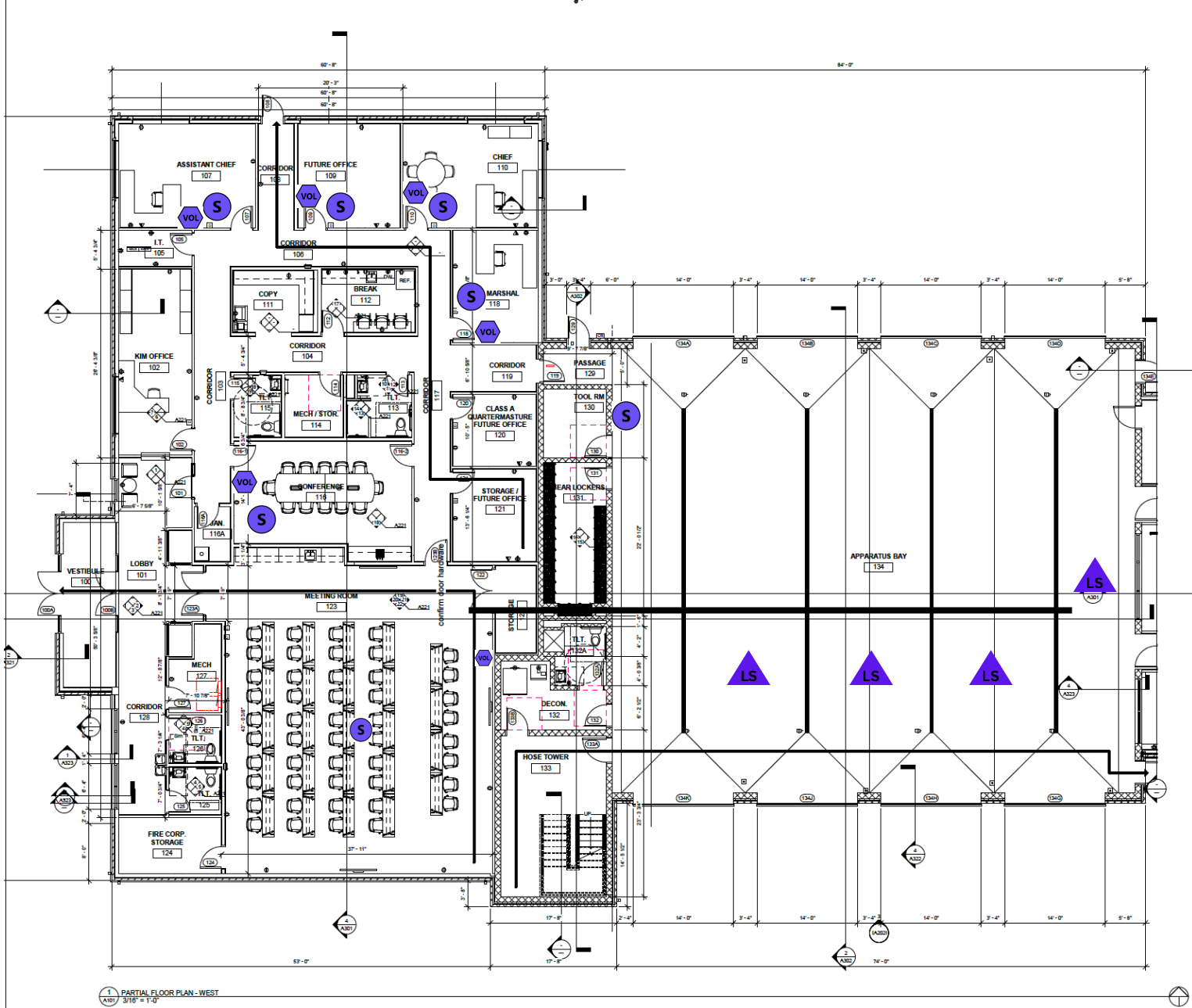
UniFi Door Plan

- CR** Card Reader
- KR** Keypad Reader
- DC** Door Contact
- PR** Pro Reader
- INT** Intercom/ Viewer

- 1** Cat6 Wall Jack
- 2** Cat6 Wall Dual
- 4** Cat6 Wall Quad
- AP** Access Point
- FLOOR 1** Cat6 Floor Dual
- FLOOR 2** Cat6 Floor Quad
- MDF** Main Data Closet
- IDF1** Addtl Data Closet

- CAM** Dome / Bullet Camera
- FISH EYE** FishEye 360 Camera
- Viewport** Viewport Camera Viewing

- S** Speaker
- vol** Volume Control
- C** Coax Jack
- AC** Audio Controller
- TV** Television
- RC** Room Controller
- CC** Conference Camera



1 PARTIAL FLOOR PLAN - WEST
 A107 3/16" = 1'-0"

WRIGHT CITY FIRE
STATION 1 WEST
 090225
 VER 2

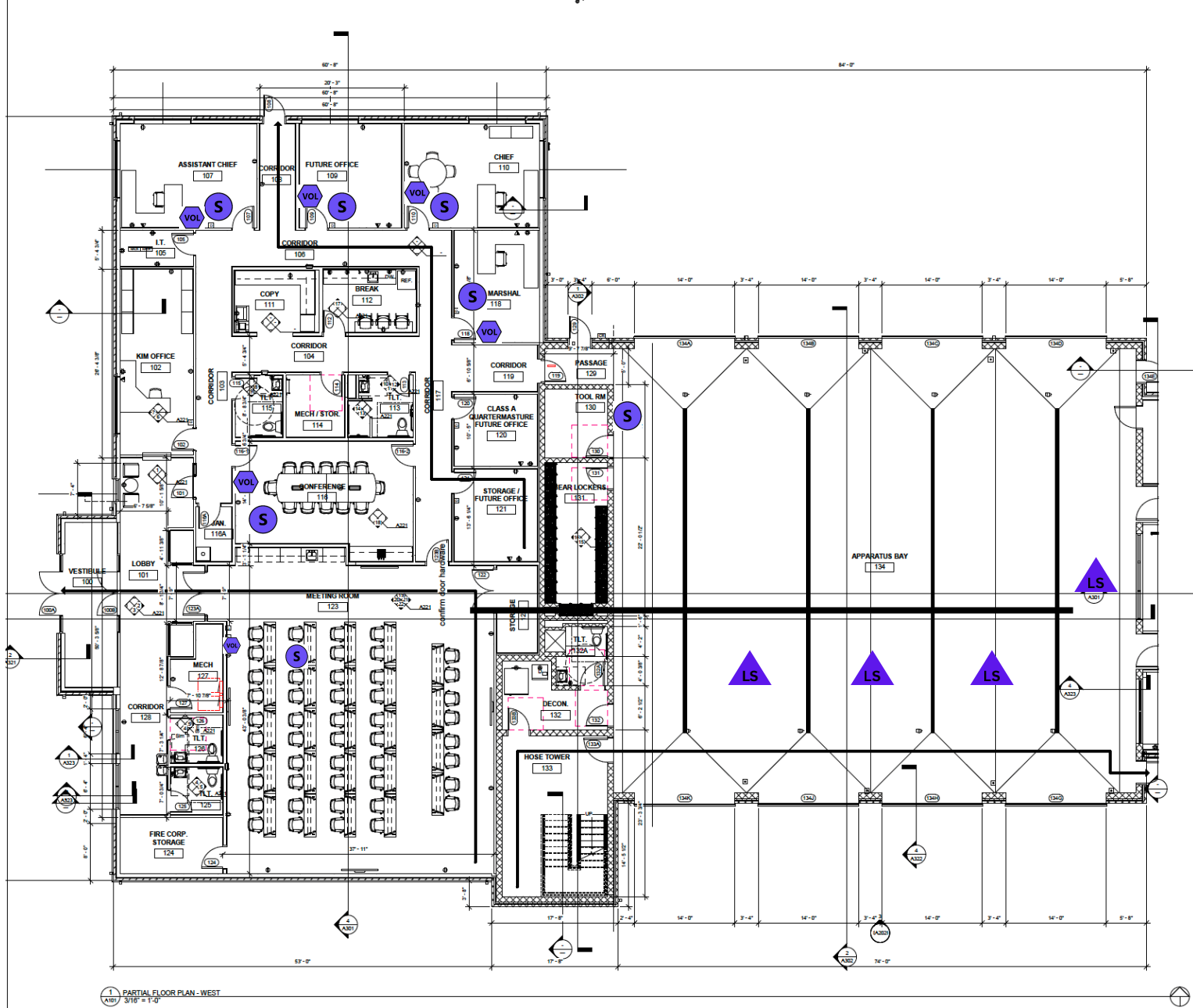
ALERTING

- CR** Card Reader
- KR** Keypad Reader
- DC** Door Contact
- PR** Pro Reader
- INT** Intercom/ Viewer

- 1** Cat6 Wall Jack **FLOOR** Cat6 Floor Dual
- 2** Cat6 Wall Dual **FLOOR** Cat6 Floor Quad
- 4** Cat6 Wall Quad **MDF** Main Data Closet
- AP** Access Point **IDF1** Addtl Data Closet

- S** Alerting Speaker
- VOL** Scanner Volume
- LS** Alert Lighted Speaker

- S** Speaker **VOL** Volume Control
- C** Coax Jack **AC** Audio Controller
- TV** Television **RC** Room Controller
- CC** Conference Camera



1 PARTIAL FLOOR PLAN - WEST
 A107 3/16" = 1'-0"

WRIGHT CITY FIRE

STATION 1 WEST

**090225
 VER 2**

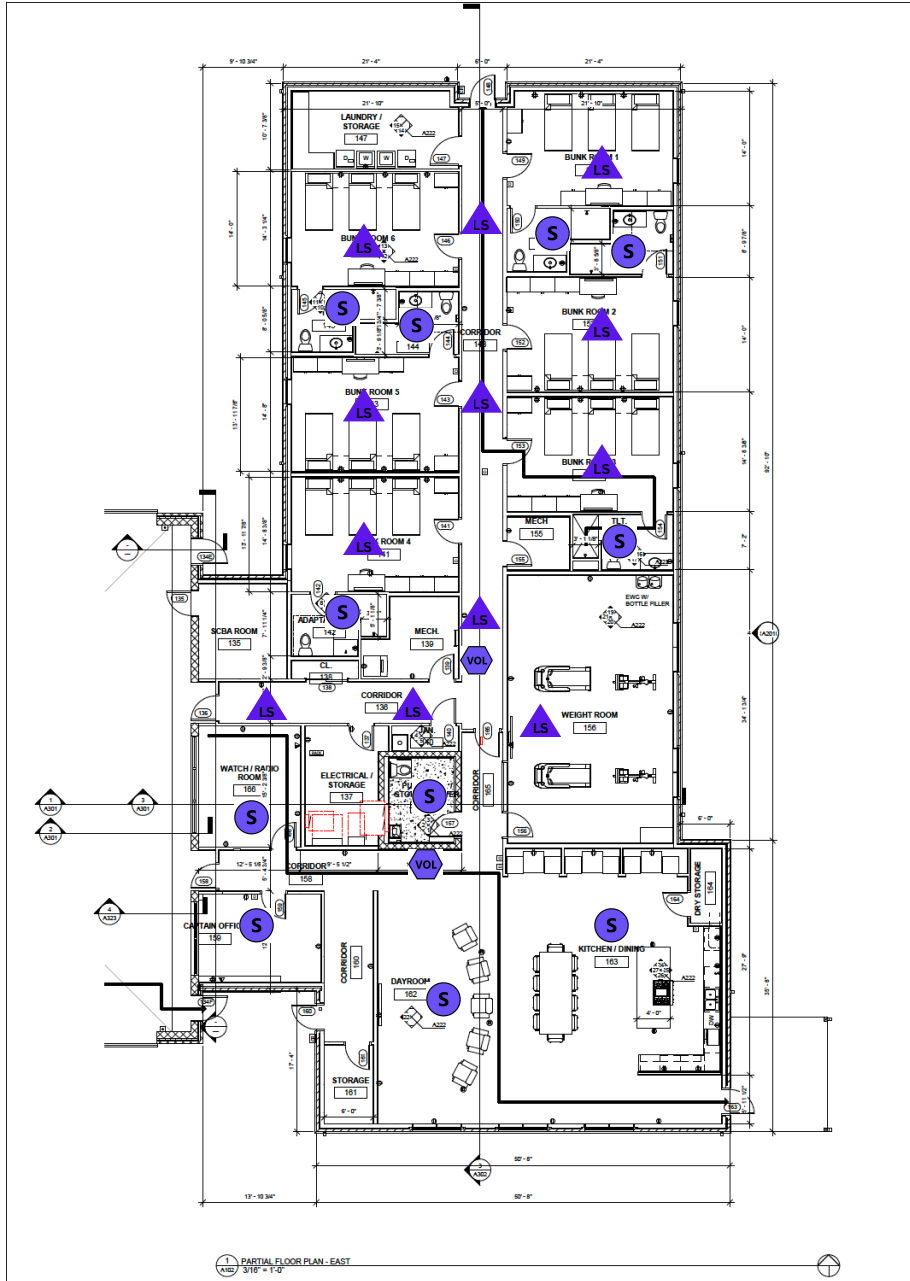
ALERTING

- CR** Card Reader
- KR** Keypad Reader
- DC** Door Contact
- PR** Pro Reader
- INT** Intercom/ Viewer

- 1** Cat6 Wall Jack **FLOOR** Cat6 Floor Dual
- 2** Cat6 Wall Dual **FLOOR** Cat6 Floor Quad
- 4** Cat6 Wall Quad **MDF** Main Data Closet
- AP** Access Point **IDF1** Addtl Data Closet

- S** Alerting Speaker
- VOL** Scanner Volume
- LS** Alert Lighted Speaker

- S** Speaker **VOL** Volume Control
- C** Coax Jack **AC** Audio Controller
- TV** Television **RC** Room Controller
- CC** Conference Camera



**WRIGHT CITY FIRE
 STATION 1 EAST**

090225
 VER 2

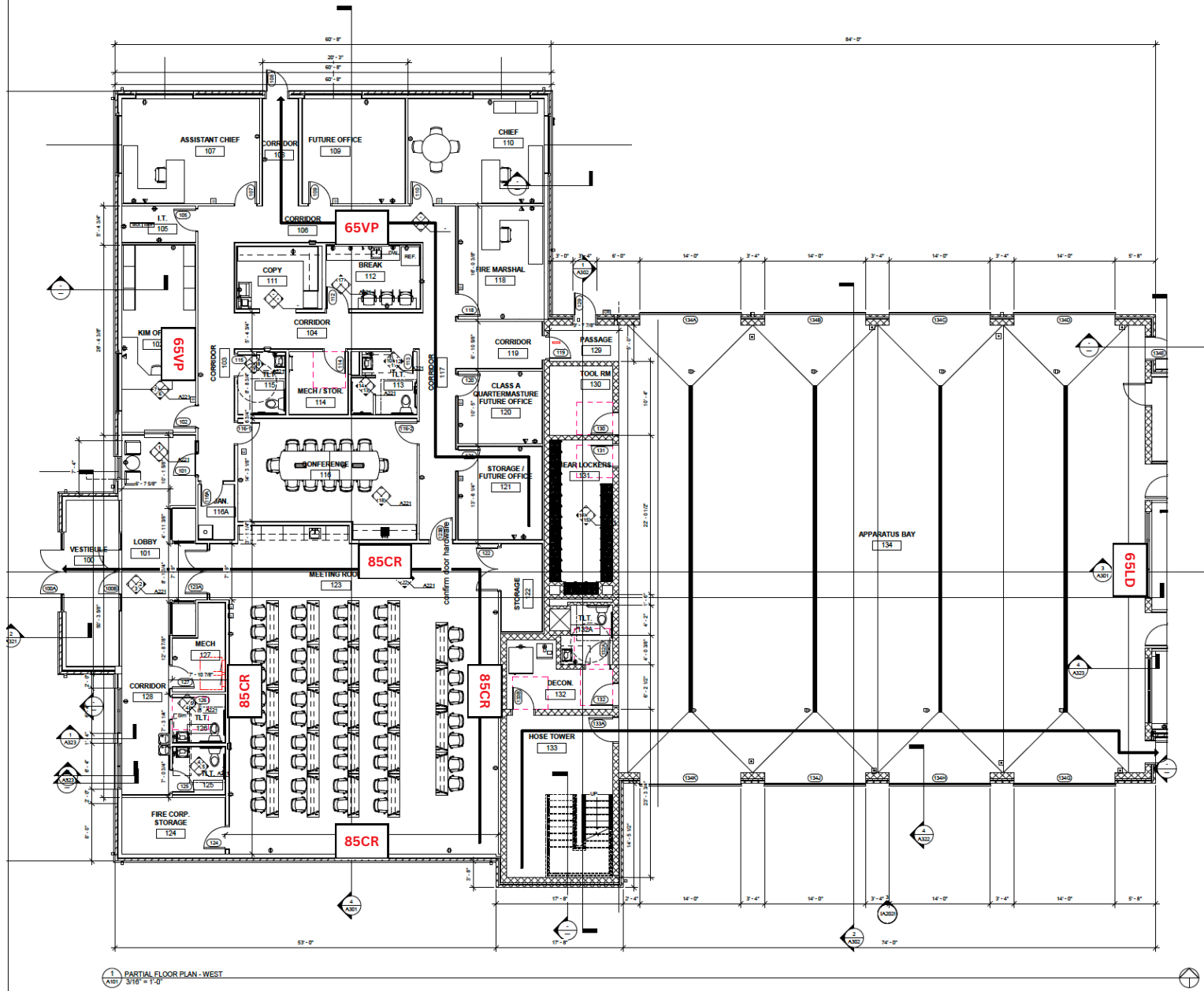
ALERTING

- CR** Card Reader
- KR** Keypad Reader
- DC** Door Contact
- PR** Pro Reader
- INT** Intercom/ Viewer

- 1** Cat6 Wall Jack **FLOOR** Cat6 Floor Dual
- 2** Cat6 Wall Dual **FLOOR** Cat6 Floor Quad
- 4** Cat6 Wall Quad **MDF** Main Data Closet
- AP** Access Point **IDF1** Addtl Data Closet

- S** Alerting Speaker
- VOL** Scanner Volume
- LS** Alert Lighted Speaker

- S** Speaker **VOL** Volume Control
- C** Coax Jack **AC** Audio Controller
- TV** Television **RC** Room Controller
- CC** Conference Camera



WRIGHT CITY FIRE
STATION 1 WEST
 090225
 VER 2

TV / Monitor Schedule

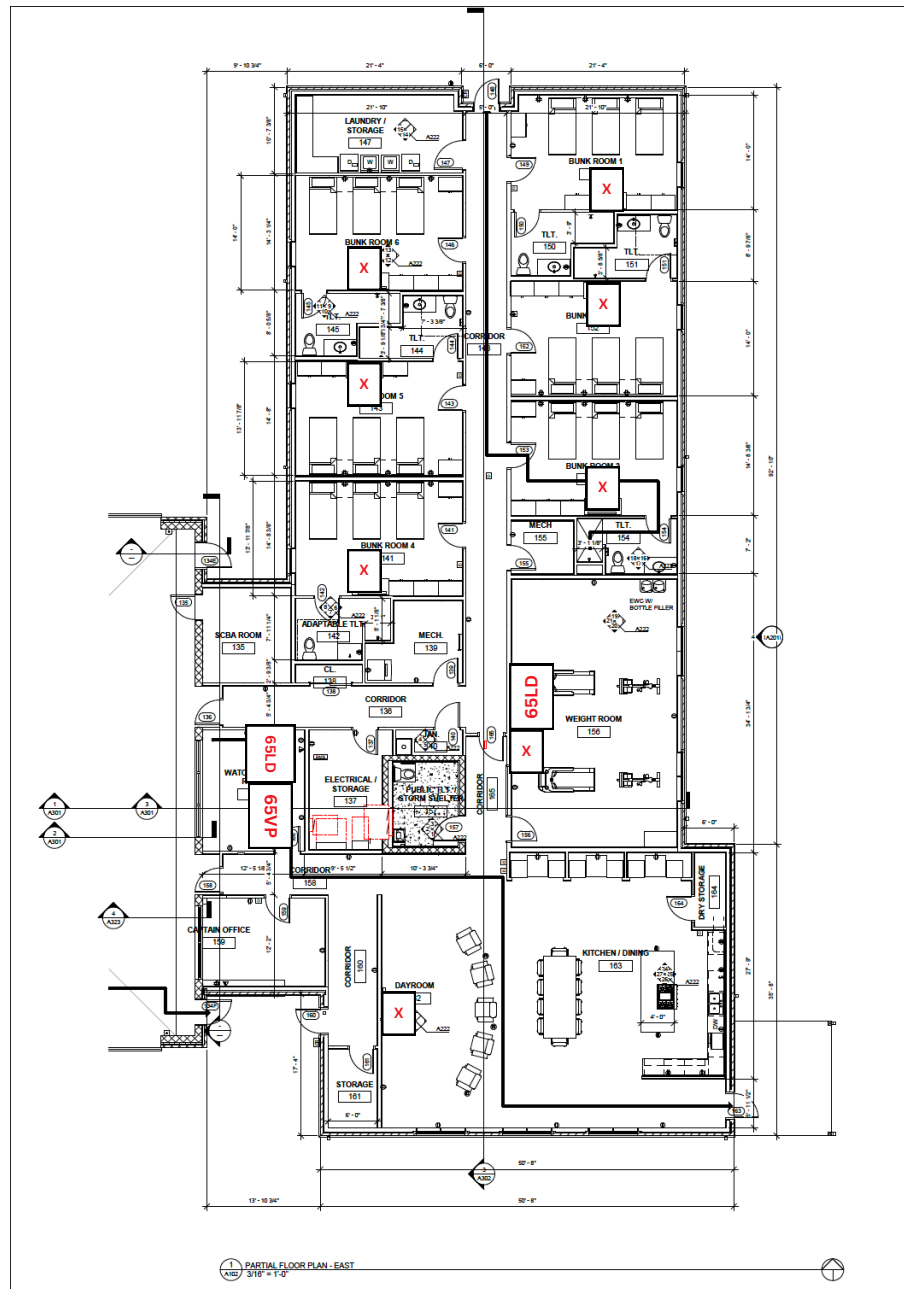
- X Non FeatherShark
- 65LD TV and Size Function

- CR Card Reader
- KR Keypad Reader
- DC Door Contact
- PR Pro Reader
- INT Intercom/ Viewer

- 1 Cat6 Wall Jack FLOOR Cat6 Floor Dual
- 2 Cat6 Wall Dual FLOOR Cat6 Floor Quad
- 4 Cat6 Wall Quad MDF Main Data Closet
- AP Access Point IDF1 Addtl Data Closet

- S Alerting Speaker
- VOL Scanner Volume
- LS Alert Lighted Speaker

- S Speaker VOL Volume Control
- C Coax Jack AC Audio Controller
- TV Television RC Room Controller
- CC Confernce Camera



WRIGHT CITY FIRE

STATION 1 EAST

**090225
VER 2**

TV / Monitor Schedule

X Non FeatherShark

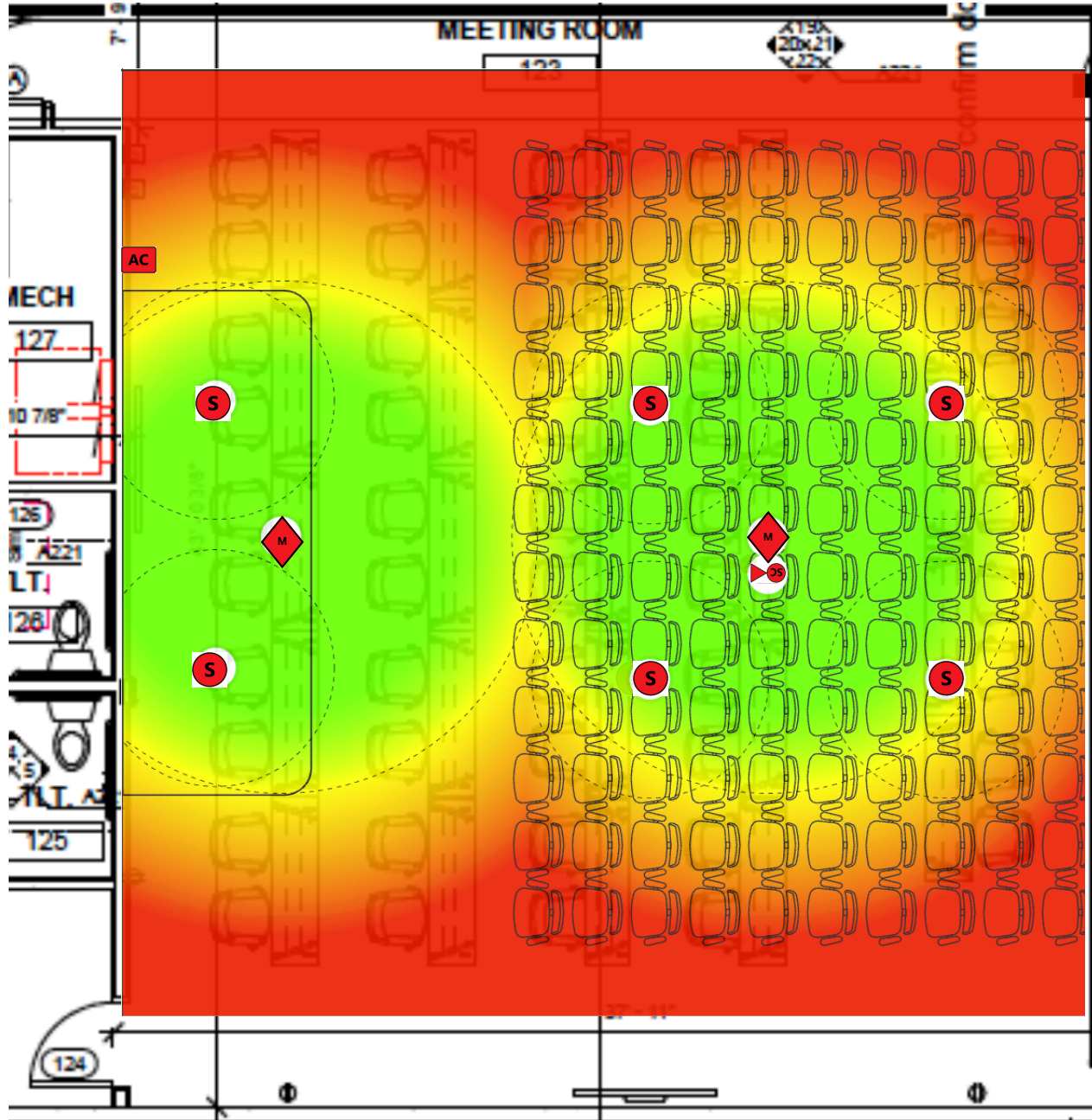
65LD TV and Size Function

- CR** Card Reader
- KR** Keypad Reader
- DC** Door Contact
- PR** Pro Reader
- INT** Intercom/ Viewer

- 1** Cat6 Wall Jack
- 2** Cat6 Wall Dual
- 4** Cat6 Wall Quad
- AP** Access Point
- FLOOR** Cat6 Floor Dual
- FLOOR** Cat6 Floor Quad
- MDF** Main Data Closet
- IDF1** Addtl Data Closet

- S** Alerting Speaker
- VOL** Scanner Volume
- LS** Alert Lighted Speaker

- S** Speaker
- vol** Volume Control
- C** Coax Jack
- AC** Audio Controller
- TV** Television
- RC** Room Controller
- CC** Conference Camera



WRIGHT CITY FIRE

STATION 1 WEST

090225
VER 2

Meeting Room

Non FeatherShark

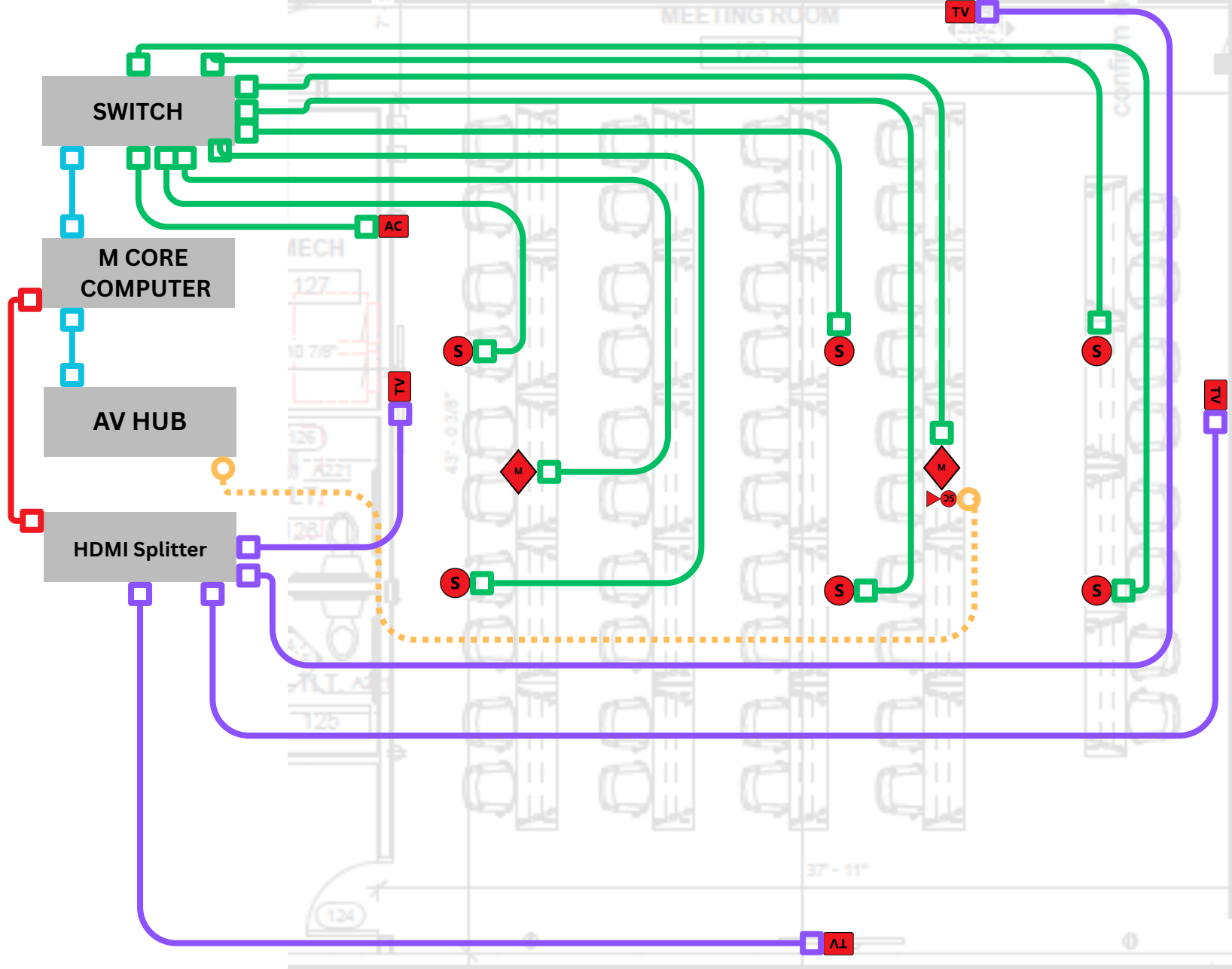
TV and Size Function

- Card Reader
- Keypad Reader
- Door Contact
- Pro Reader
- Intercom/ Viewer

- Cat6 Wall Jack Cat6 Floor Dual
- Cat6 Wall Dual Cat6 Floor Quad
- Cat6 Wall Quad Main Data Closet
- Access Point Addtl Data Closet

- Alerting Speaker
- Scanner Volume
- Alert Lighted Speaker

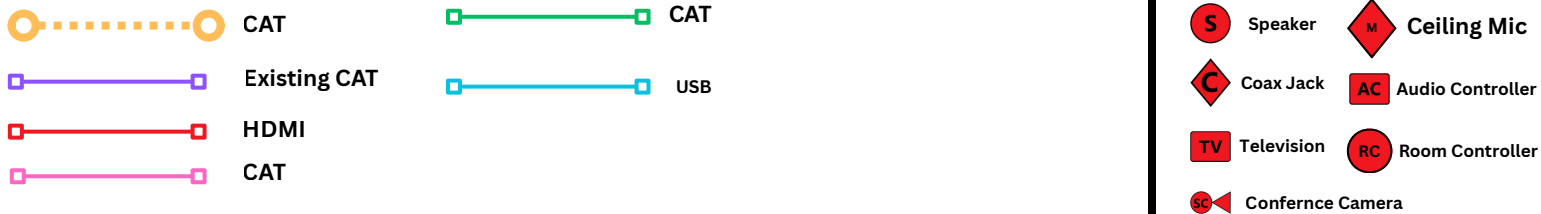
- Speaker Ceiling Mic
- Coax Jack Audio Controller
- Television Room Controller
- Conference Camera



WRIGHT CITY FIRE
STATION 1 WEST

090225
VER 2

Meeting Room Wiring





Access G3 Reader Pro

Third-generation, indoor/outdoor NFC reader and intercom with Touch Pass support.

[Ubiquiti Store](#)



Camera G5 Turret Ultra

Ultra-compact, tamper-resistant, and weatherproof 2K HD PoE camera with long-range night vision.

[Ubiquiti Store](#)



Access Intercom Viewer

Display that works with Intercom and Reader Pro for visitor screening and remote access control.

[Ubiquiti Store](#)



Protect Viewport

Easy-to-use hub for viewing Protect camera feeds on an HDMI display.

[Ubiquiti Store](#)



Enterprise Access Hub

Enterprise-grade access hub with entry and exit control up to eight doors and battery backup support.

[Ubiquiti Store](#)



Network Video Recorder Pro

A 2U-sized video recorder with (7) 2.5/3.5" HDD bays that can provide up to 60 days of storage for (24) 4K cameras or (70) Full HD cameras.

[Ubiquiti Store](#)



Access Point U7 Pro

Ceiling-mounted WiFi 7 AP with 6 spatial streams and 6 GHz support for interference-free WiFi in demanding, large-scale environments.

[Ubiquiti Store](#)

WRIGHT CITY FIRE

STATION 1

090225
VER 2

General:

Electrical Contractor to pull proper power and Cat6 to all Phone and Computer Locations.

Electrical Contractor to pull all Low voltage cabling

All Cat6 runs will homerun to the IT room and terminated in a patch panel in the Network rack. Electrical contractor is responsible for terminating both Head and Field end of cabling and certifying the cable.

Rack to be provided by Owners Vendor and installed by Electrical Contractor.

See Responsibility sheet

Door Access:

Electrical Contractor: All Card Reader, Keypad Reader, Intercom, and Doorbell Pro Locations will need Cat6 cabling that homeruns to patch panel in IT Rack

Each Door receiving a Keypad Reader or Card Reader will need an 18-4 cable from the strike pocket homerun to the IT Room. Please leave 15' at the door.

The contractor will provide pre cut door frames and install specified electric strikes. Strike Locks will operate at 12VDC1A.

HARDWARE - Readers, Door Bell, and Door Controller will be supplied by Owners Vendor and installed by the Electrical Contractor. 18-4 wire and CAT6 will be provided and installed by the Electrical Contractor.

Cameras:

Viewports for Camera Viewing require Cat6 jack homerun from the specified TV location to the patch panel in the IT Room. TV side terminations will be made into wall jacks, IT Room will be into the provided patch panel.

Cameras will need Cat6 homerun to the patch panel in the IT Room.

HARDWARE - Viewports and Cameras will be Customer Supplied, Electrical Contractor Installed. CAT6 and termination parts will be Electrical Contractor Supplied and Installed - See Responsibility Sheet

Network / LiveDash:

Electrical Contractor - Drawing assumes Electrical Contractor to pull proper power and Cat6 to all Phone and Computer Locations.

Contractor to pull all Low voltage

Access Points will need Cat6 homeruns to IT room. Access Points in Apparatus Bay and Fitness/Workout will be wall-mounted 88-96" high

All other Access Points will be ceiling-mounted. Round ceiling box is to be provided and installed by Electrical Contractor.

LiveDash monitor and articulating mount. Power needed is 110V.

All TV's to have at least a single CAT6 connection terminated into a wall plate behind it, adjacent to power. Both should be obscured from view once TV is installed.

IT Room will need adequate 110V.

IT Room will need 4x4 sheet ¾ plywood mounted on the wall. (Mounting location for Door Access Controller and other non-rack mounted devices).

TV:

56" in bunks, 65" on LiveDash, 85 in DayRoom, 85's in Large Meeting Room twin 56 in Conference Room

Electrical contractor to provide all low voltage Cat6 cable and power required for each TV location. Elevation of rough in to be coordinated with owner.

Station 1 Building			
Network Equipment and Hardware			
Hardware	Purpose	Provided By	Installed By
Network Rack	Mount Network Equipment and Wiring	Owner Vendor	Electrical Contractor
Unifi U7 Pro Access Points (6)	Provide WiFi to Building	Owner Vendor	Electrical Contractor
Unifi Dream Machine Pro (1)	Runs Internal Network	Owner Vendor	Owner Vendor
Unifi Pro Switches (2x48)	Runs Internal Network	Owner Vendor	Owner Vendor
Unifi Patch Cables (2x48)	Uplink Patch Panel Cat6 Ports to each Switch	Owner Vendor	Owner Vendor
Network UPS / Battery Backup (2)	Power backup for Network Equipment	Owner Vendor	Owner Vendor
VoIP Phones (TBD)	Telecomm Service for the Building	Owner Vendor	Owner Vendor
Patch Panel (2x48)	Consolidate and Organize Network Wiring	Owner Vendor	Electrical Contractor
Fiber from HQ to Maintenance	Network Uplink	Electrical Contractor	Electrical Contractor
Wall and Floor Jacks	Terminate Network Wiring	Electrical Contractor	Electrical Contractor
Cat6 Cabling	Network Wiring	Electrical Contractor	Electrical Contractor
Camera Security			
Hardware	Purpose	Provided By	Installed By
Unifi G5 Turret Ultra (10)	Exterior Building Cameras	Owner Vendor	Electrical Contractor
Unifi G5 Bullet (2)	Interior Building Cameras	Owner Vendor	Electrical Contractor
Unifi Viewport (2)	Camera Viewing Solution	Owner Vendor	Electrical Contractor
Unifi NVR Pro (1)	Camera Recording and Management	Owner Vendor	Owner Vendor
Door Access			
Hardware	Purpose	Provided By	Installed By
Unifi Reader PRO (13)	Keypad Readers for Exterior Doors	Owner Vendor	Electrical Contractor
Unifi Enterprise Access Hub (2)	Manage Door Access and Door Strikes	Owner Vendor	Electrical Contractor
Unifi Reader Junction Box (14)	Mount Exterior Keypad Readers	Owner Vendor	Electrical Contractor
Unifi Intercom Viewer (4)	View and Allow Entry to Visitors	Owner Vendor	Electrical Contractor
G4 Doorbell Pro (1)	Doorbell tied to overhead system	Owner Vendor	Electrical Contractor
Electronic Door Strikes / Contacts	Connect Door Latches to Door Access System (12VDC1A)	Door Hardware Supplier	Electrical Contractor
18/4 Cabling	Door Strike Wiring	Electrical Contractor	Electrical Contractor
Cat6 Cabling	Door Equipment Wiring (Readers)	Electrical Contractor	Electrical Contractor

TV Monitors			
Hardware	Purpose	Provided By	Installed By
Samsung 65" TV (6)	Multi Purpose TV Monitor	Owner Vendor	Electrical Contractor
Samsung 85" TV (4)	Conference Room and Breakout Room TV Monitor	Owner Vendor	Electrical Contractor
Full Articulating TV Mount (10)	Mount Multi Purpose TVs to Wall Locations	Owner Vendor	Electrical Contractor
Meeting Room			
PENDING FINAL DESIGN	PENDING FINAL DESIGN	PENDING FINAL DESIGN	PENDING FINAL DESIGN
Hardware	Purpose	Provided By	Installed By
Ceiling Mounted Speakers (6)	Speaker, Ceiling Grid Mounted	Owner Vendor	Electrical Contractor
Ceiling Mounted Mics (4)	Microphone, Ceiling Mounted	Owner Vendor	Electrical Contractor
	Station Alerting		
PENDING FINAL DESIGN	PENDING FINAL DESIGN	PENDING FINAL DESIGN	PENDING FINAL DESIGN

